

# CRAVNE

The Total Source for Crane Buyers, Sellers, Owners and Operators **HOT LINE**<sup>®</sup>

## All About REACH

**SELF-ERECTORs**  
are Masters of  
Material Handling

**Crane & Equipment  
Dealers, Page 33**

**Cranes & Equipment  
For Sale, Page 45**

**Parts, Accessories  
& Services, Page 71**

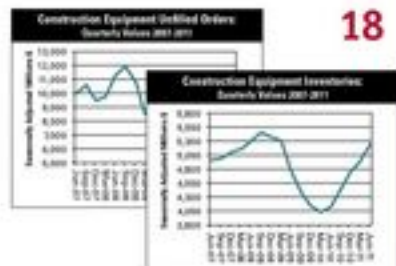


## PRODUCT FOCUS 14

**Made for Material Handling**  
BY LUCY PERRY

Height and reach are the two qualities that sell self-erectors as a material handling device on jobsites. Size one right, and they'll run circles around more one-dimensional equipment, such as telescopic handlers. Here, a San Marco self-erector owned by J-crane, Covington, Ohio, is used by a restoration contractor on a job in Cincinnati, Ohio.

## 18



# CRAVE

December 2011 **HOT LINE**

## Contents

### 4 CRANE TALK

BY TRACY BENNETT  
**Two Steps Forward,  
One Step Back**

### 8 NEWS LINK

### 12 GUEST PERSPECTIVE

BY CHIP POCOCK  
**Qualifying and  
Documenting Riggers  
and Signalpersons**

### 18 BUSINESS ISSUES

BY FRANK MANFREDI  
**Searching for the  
New Normal**  
Market forecasts for construction begin inching back up in 2011 and 2012 due to fleet replenishment.

### 26 REGION REPORT

**Fun, Fast, and Thrilling**  
Coney Island gets a new look with the help of Superior Crane's 50-ton Terex truck crane.

### 28 SPOTLIGHT: RIGGING

Delta Rigging & Tools Answers the Call with Unique Products

### 30 UPFRONT & HOT LINE INDEX

### 44 SPOTLIGHT: CRANES

ICUEE Review: New Cranes and Upgrades Debut at The Demo Expo

### 70 SPOTLIGHT: PRODUCTS & SERVICES

Hands-Free System Ensures Clear Communication

### 86 POSITIVE PRACTICES

#### COMING IN 2012

Starting in January, *Crane Hot Line* becomes *Crane & Rigging Hot Line*. Why? Because cranes and rigging go hand-in-hand.

#### Upcoming Articles in *Crane & Rigging Hot Line*

- All-Terrain Cranes
- Understanding D/d Ratio
- Crane Repair & Maintenance

# Fun, Fast, and Thrilling

## Coney Island gets a new look with help of 50-ton Terex truck crane

**Y**ou could almost call it a daredevil act: Facing tight deadlines, high winds, and frigid temperatures, Superior Crane Rental Inc. brought in three cranes for the installation of more than 20 new thrill rides at Coney Island. Helping to put a new face on the iconic American amusement park, Superior utilized the heft of a 50-ton truck crane over two off-seasons to handle unwieldy ride components.

Long a part of treasured Americana, historic Coney Island, in Brooklyn, N.Y., once attracted visitors from around the world. A lack of park investment in recent decades eroded its nostalgic luster and visitor numbers. To counteract this trend, New York City officials rezoned adjoining property for the construction of two new theme parks within Coney Island—Luna Park and Scream Zone—over two off-seasons from 2009 to 2011.

Extremely tight timelines to construct more than 20 new rides meant long days for many dedicated contractors working on the project to ensure the theme parks opened on schedule. The list of contractors included Norwood, N.J.-based Superior. "We were at the site seven days a week, 12 to 20 hours per day," said Brian Marcason, Superior's vice president. "The parks had to be complete in just 100 days, and we had our cranes on site for one and a half months to construct Luna Park and about two and a half months for Scream Zone."

To meet these tight deadlines, Superior used three cranes for the construction of Luna Park and two for assembling Scream Zone's four rides, which included the first new roller coasters at Coney Island since 1927. The company relied on its Terex T-550-1 truck crane to bear the brunt of the heavy lifting.

### Picking up the pieces

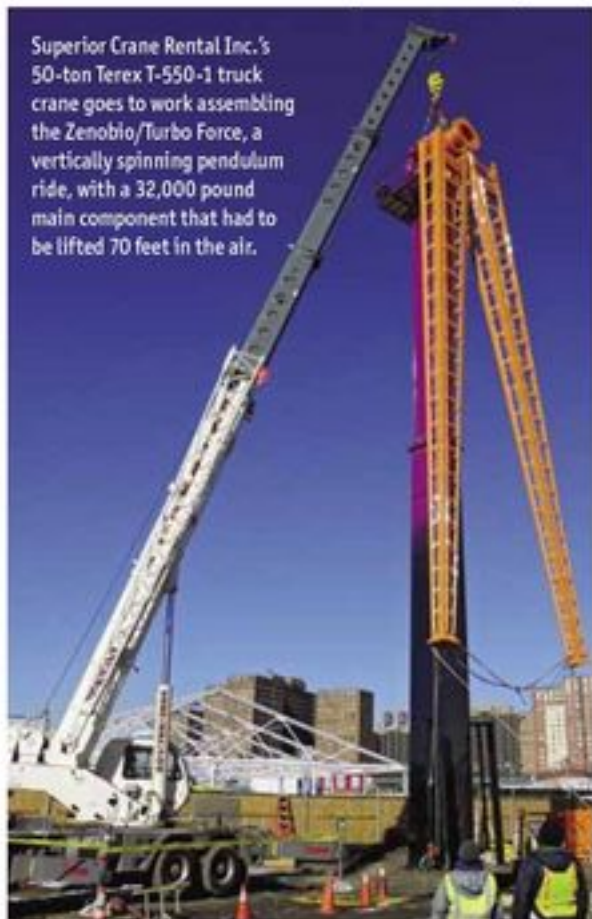
Ride components originated from amusement-park ride manufacturer Zamperla's factory in Italy, which meant volumes of container traffic during the first part of construction. "The T-550-1 was running continuously," commented Marcason. "For the roller coasters alone, we unloaded 26 sea containers and other heavy components."

Like a jigsaw puzzle, each new rollercoaster came with numerous track sections that had to be put together. The T-550-1 lifted and held in place hundreds of track pieces, ranging in size from 5,000 to 15,000 pounds, while crew members secured each segment.

Powering the park's new Steeplechase rollercoaster, named after an older theme park at Coney Island that no longer exists, a 41,000-pound motor was picked and set into place by the T-550-1 truck crane. Marginal ground conditions and an extremely tight jobsite made this a complex lift. Trenches completely surrounded the T-550-1, limiting the crane's mobility, and crews had to set the crane on steel plates for solid footing. The machine's 110-foot main boom and 50-ton capacity proved to be great assets in positioning the 18.6-ton motor in place.

"The T-550 has a superior lift chart throughout its range and out-picks other crane designs by up to 4,000 pounds in some

Superior Crane Rental Inc.'s 50-ton Terex T-550-1 truck crane goes to work assembling the Zenobio/Turbo Force, a vertically spinning pendulum ride, with a 32,000 pound main component that had to be lifted 70 feet in the air.



instances," said Marcason.

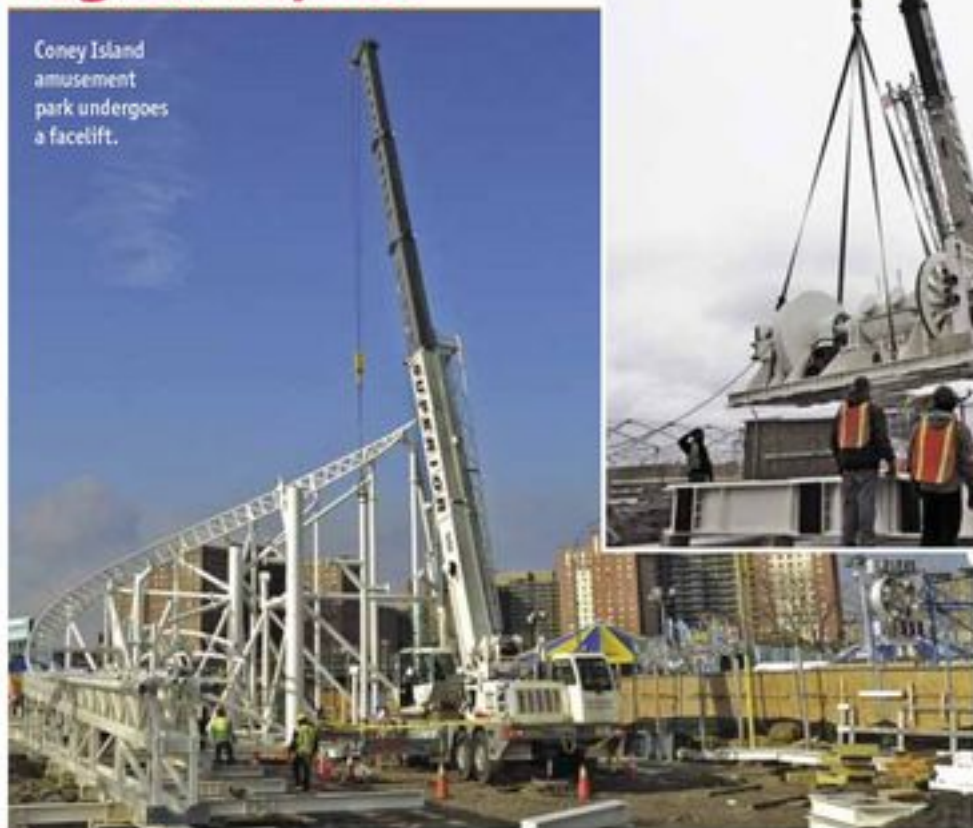
Towering over the Scream Zone, the Turbo Force ride spins thrill-seekers head over heels at heights reaching 132 feet. Constructing the ride also created a buzz among workers, as the T-550-1 was called on to lift a 32,000-pound main component 70 feet in the air.

While Steeplechase and Turbo Force tested the crane's strength, constructing Scream Zone's Sling Shot ride tested the operator's finesse. While the ride's anchors weighed a mere 4,000 pounds each, they topped out at 140 feet high. The winter's seashore winds made a difficult lift even more of a challenge. "We were dealing with winds during the worst winter in recent history, and many of the guys were betting against us positioning the anchors," recalled Marcason. However, the T-550-1, equipped with its offset two-stage jib, gave operators up to 170 feet of height to work with. "The crane set both with no problem," he added.

*Continued on page 32 >*

## Region Report

Coney Island amusement park undergoes a facelift.



The Terex T-550-1 truck crane's 110-foot main boom and 50-ton capacity proved to be a great asset in positioning the Steeplechase rollercoaster's 18.6-ton motor in place.

< Continued from page 26

### A thrill-a-minute machine

Much of the heavy lifting took place during the short winter days of the off-season, so as not to deter crowds from visiting Coney Island during the summer months. As a result, many of the picks were done at night and in sub-freezing temperatures. All went smoothly, reported Marcason. "The boom of the T-550-1 extends quickly, and the operator can quickly change from one to six lines. The computer is easy to work, even for operators not familiar with running a Terex crane."

Air-ride suspension delivers a smooth ride over rough surfaces, and at the jobsite, positioning and rigging are fast, while the engine and hydraulic system deliver the power to get the job done smoothly. Designed for efficiency and productivity on the job, the T-550-1's compact chassis configuration improves crane positioning in tight spaces. The truck crane carries its full 11,000-pound counterweight and jib without the need for a second truck or operator. Counterweights of 5,000 and 8,000 pounds are also available to meet jobsite specifications. Electro-proportional joysticks require less effort to operate regardless of load weight, while two-speed winches shift on the fly, allowing operators to match hook speed with the needs of the job.

The crane's ability to travel at highway speeds meant quick transport to the jobsite, and, once on site, "the crane set up fast and our crews could quickly install the jib," mentioned Marcason. When picks were made at night, Superior's operators and the crews working with the crane appreciated the boom lights, which helped to light up the work area. But probably the most important feature during

the last two winters was found inside the cab. "The cab's heating system worked extremely well to keep our guys warm during those frigid winter days," concluded Marcason.

Superior purchased the truck crane from Empire Crane, who has furnished the rental company with all their Terex machines. "They take care of the crane if there are any warranty issues," explained Marcason. "If anything comes up, we just call them and they take care of it for us."

Throughout the last two seasons, Superior's crews performed hundreds of heavy and intricate lifts with the T-550-1. With both theme parks now in operation, Coney Island is once again attracting new thrill seekers in the hundreds of thousands, restoring some of the luster to this famed American attraction. Since the Coney Island job, the Terex truck crane is out daily performing run-of-the-mill work for Superior, such as HVAC, steel framing/structural, and tree work.

Family-owned Superior Crane Rental, Inc. provides lifting services for the New Jersey, New York, and Connecticut markets. The 40-year-old company's operators are fully State and City licensed, NCCCO certified, and OSHA 10-hour certified. Maintaining a fleet of mobile truck cranes with lift capacities ranging from 26 to 60 tons, Superior regularly handles a variety of lifting applications from steel erection and wood trusses to large equipment positioning and cell tower and wireless communication work.

Dave Marcason also reported the company plans to purchase another machine in 2012, but hasn't yet decided the type or capacity they'll need next year. Despite an incredibly rainy late summer/early fall, business is good for Superior Crane Rental. "We're busy every day, though we've had our share of rain up here." ■