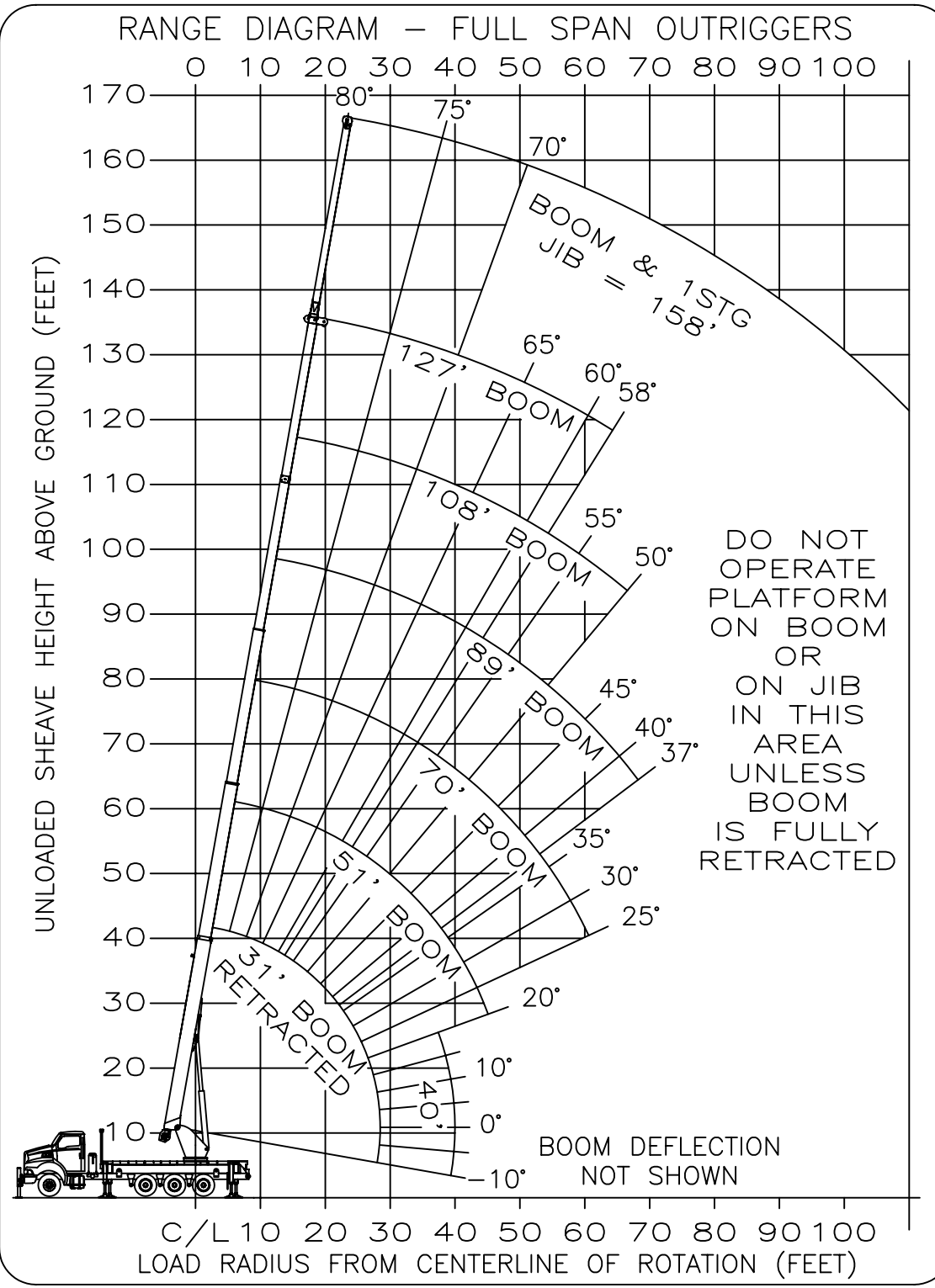


REV G



PLATFORM OPERATION CRANE MODEL AC35/38-127S

NON-INSULATED PLATFORM ASSEMBLY



ALTEC P/N 970016014
ONLY FOR USE ON
ALTEC BOOM TRUCKS.

PLATFORM ASSEMBLY
WEIGHT = 510 LBS.

PLATFORM LOAD
CAPACITY = 800 LBS.

LOAD LINE MUST BE
STOWED ON LUG WHEN
PLATFORM IS INSTALLED
ON BOOM TRUCK CRANE.

ASME B30.23-1998
COMPLIANT

ALTEC INDUSTRIES
325 SOUTH CENTER DRIVE
DALEVILLE, VA 24085

MFG. DATE __mo/20__yr

970017114 G