



FOR NEW EQUIPMENT SALES, CALL  
**866.966.2969**  
TO SPEAK WITH AN ALTEC REPRESENTATIVE  
or visit us online at [altec.com](http://altec.com)

**Altec**  
TELESCOPIC CRANE

## STANDARD FEATURES

- Altec LMAP (Load Moment & Area Protection) System
  - » Slew-based Zone Rating Limits Capacity Based on Outrigger Positions
  - » Rated Capacity Limiter
  - » Displays: Boom Length, Boom Angle, Load on Hook, Percent of Rated Capacity
  - » Operator Defined Audible Alarm Set-Points for Boom Angle, Length and Rotational Position
- Outrigger Boom Interlock System
- Outrigger Motion Alarm
- Anti-Two Block Device
- Winch Control at Load Hook Stow Point

- 15,000 lb 2-Speed High-Performance Piston Winch
- Rotation Resistant Wire Rope
- Extra-wide Walk Through Control Stations

## OPTIONS

- Radio Remotes
- Continuous Rotation
- Extended Outrigger Jacks
- 26 - 44 ft Telescopic Jib
- 2-Man Personnel Platform

## GENERAL SPECIFICATIONS

Boom Length (4-Section)	101 ft (30.8 m)
Stowed Travel Height 42 inch frame	13.4 ft (4.1 m)
Vehicle Travel Length	40.8 ft (12.43 m)
3 Position Out-and-Down Outriggers	
Main Outrigger Span	24 ft (7.3 m)
Auxiliary Outrigger Span	17.9 ft (5.4 m)

## CRANE SPECIFICATIONS

Maximum Lift Capacity	60,000 lb (27,215 kg)
Powered Sheave Height	109 ft (33.2 m)
Two Speed Winch Capacity	15,000 lb (6,803 kg)
ASME B30.5 Compliant	

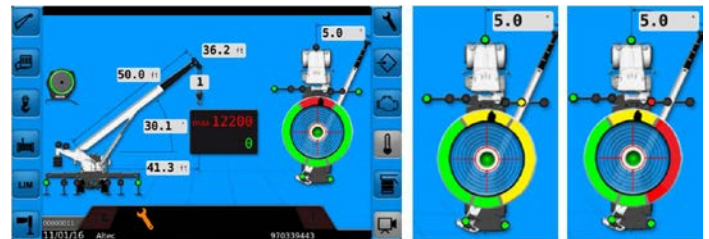
Recommended safety equipment, available through Altec Supply, include wheel chocks and outrigger pads.

UNIT		RECOMMENDED CHASSIS DIM				RECOMMENDED CHASSIS SPECIFICATIONS				
Model	Rear Axle	CA (in)	WB (in)	AF (in)	AS (in)	Front Axle Rating (lb)	Rear Axle Rating (lb)	GVWR (lb)	Frame Sec Modulus (in <sup>3</sup> )	Frame RBM (in-lb)
AC30-101B	Tandem	202	274	133	54	20,000	40,000	60,000	consult factory	
AC30-101B	Tandem w/ Pusher	210	296	128	60	20,000	48,000	68,000	consult factory	

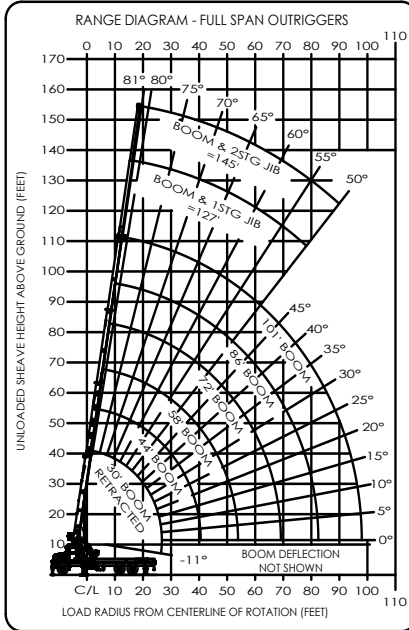
## LOAD MOMENT & AREA PROTECTION WITH ZONE RATING

The convenient LMAP menu navigation with an intuitive user interface displays load on hook, rated capacity percentage, boom length and angle, load radius, and operator-defined protection with audible alarms. While this feature is unique to Altec, the system's hardware consists of common "off-the-shelf" components that were critically selected for their performance and serviceability.

To further enhance job site safety, the system also uses the position of the outriggers to determine the appropriate load capacity for each slewing area of the machine. For instance, if one side of the machine has the outriggers at full span, while the other side is at short span, the system will automatically allow for use of the full span load chart on one side, while limiting to the short span chart on the other side. If the operator tries to slew into a zone with a load above the rated capacity for that zone, the system will engage a smooth stop to the rotation system to prevent entering that zone.



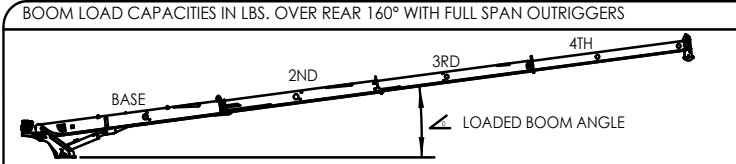
# LOAD CHART - FULL SPAN OUTRIGGERS



DEPLOYED JIB LOAD CAPACITIES (LBS) FOR ALL BOOM LENGTHS  
JIB CAPACITIES ARE FOR FULL SPAN OUTRIGGERS

LOADED BOOM ANGLE	*50°	55°	60°	65°	70°	75°	80°
RETRACTED 26 FT JIB	700	1400	1900	2500	3200	4400	4800
EXTENDED 44 FT JIB	500	900	1300	1700	2200	3000	3000

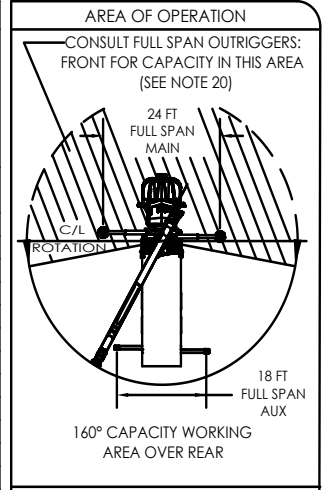
\* DO NOT OPERATE JIB BELOW THIS ANGLE UNLESS BOOM IS FULLY RETRACTED. SEE NOTE 6.



BOOM LOAD CAPACITIES IN LBS. OVER REAR 160° WITH FULL SPAN OUTRIGGERS

LOAD RADIUS (FT)	30 FT BOOM		44 FT BOOM		58 FT BOOM		72 FT BOOM		86 FT BOOM		101 FT BOOM	
	LBS	LBS	LBS	LBS	LBS	LBS	LBS	LBS	LBS	LBS	LBS	
5	76	60000										
8	70	47500	76	27000								
10	65	40800	74	27000	78	23600						
12	61	36000	71	27000	76	23600	79	22000				
14	56	30500	68	27000	74	23600	77	22000				
16	51	26000	65	25000	72	23600	75	22000	78	14500		
18	46	22500	62	24000	69	23600	74	22000	76	14500		
20	40	20000	59	21200	67	21300	72	20400	75	14500	77	10000
25	18	15000	51	16100	62	16300	68	16400	71	14500	74	10000
30			42	12800	56	13000	63	13100	68	13200	71	10000
35			31	10400	50	10600	59	10700	64	10800	68	9100
40			12	8500	43	8800	54	8900	61	9000	65	8000
45					35	7300	49	7500	57	7600	62	7100
50					24	6200	43	6400	52	6400	59	6400
55							37	5400	48	5500	55	5600
60							29	4600	43	4700	52	4800
65							19	3900	38	4000	48	4100
70									32	3400	44	3400
75									25	2800	40	3000
80									15	2400	35	2600
85											30	2200
90											23	1800
95											14	1500
100												
0		12800	0	7200	0	4600	0	3100	0	2000	0	1000
		850		600		450		350		300		250

NOTE: RATINGS ABOVE THE HEAVY LINE ARE BASED ON STRUCTURAL COMPETENCE AND NOT ON MACHINE STABILITY



DEDUCTIONS FROM RATED LOADS FOR HANDLING DEVICES

OVERHAUL BALL: 180 LBS

1-SHEAVE LOADBLOCK: 230 LBS

2-SHEAVE LOADBLOCK: 365 LBS

0° BOOM CAPACITIES

STOWED JIB LOAD DEDUCTIONS

Charts published herein are intended to be a guide only and should not be construed to warrant application for lifting purposes. Consult supplied operation manual for further details.



## BEST IN CLASS LIFTING CAPACITY

With Altec's new partially-formed boom technology, the AC30-101B boasts a best in class lifting capacity. This new design is able to save more than 1,000 pounds of boom weight when compared to a typical four plate boom design. This equates to over 20% more capacity in the working range versus the competition.



## ERGONOMIC CONTROLS AND SAFE ACCESS TO CARGO

What good is the best in class flatbed if you can't safely access your cargo? The AC30-101B provides the safest access to your flatbed through our widened Dual Walk-Through Control Stations and swing-away LMAP mount. The integrated foot pedal throttle, shortened control levers and wrist rests help to keep your operator comfortable during a long day on their feet.



## A CRANE FOR THE OPEN ROAD AND TIGHT JOBSITES

With a focus on drivability and maneuverability, the AC30-101B is just as comfortable on the highway as it is on the jobsite. The AC30-101B has a center of gravity over 10 inches lower than the competition, making any daunting on-ramp or off-ramp a breeze. On the jobsite, a tip to tail length under 41 feet as well as an available 274 inch wheelbase allows this crane to maneuver into almost any tight setup.



**866-966-2969**  
**sales@altec.com**

AIOSAC30-101B-220

33 Inverness Center Parkway  
Birmingham, AL 35242  
Fax 205.449.4774  
[www.altec.com](http://www.altec.com)

For more complete information on Altec products and services, visit us on the web at [www.altec.com](http://www.altec.com).

© 2020 Altec Inc  
All Rights Reserved

Material and specifications are subject to change without notice. Featured units in photos may include optional features. Please contact an Altec representative for all available options. Charts published herein are intended to be a guide only and should not be construed to warrant application for lifting purposes. Consult supplied operation manual for further details.

Altec® and the Altec logo are registered trademarks of Altec Inc in the United States and various other countries and may not be used without permission.

