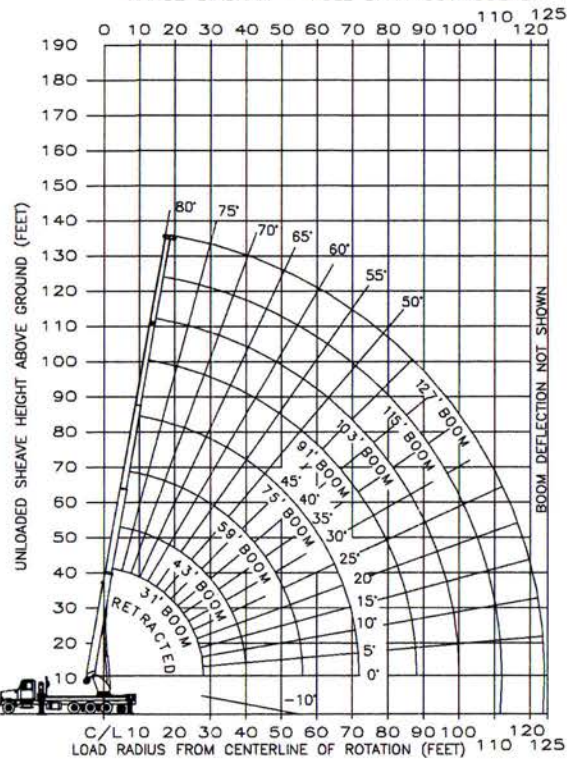




MODEL:
AC45-127S-OJ

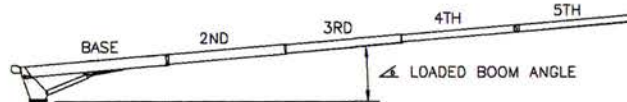
RANGE DIAGRAM - FULL SPAN OUTRIGGERS



C/L 10 20 30 40 50 60 70 80 90 100 110 120
LOAD RADIUS FROM CENTERLINE OF ROTATION (FEET)

MAIN BOOM, FULL OUTRIGGERS

BOOM LOAD CAPACITIES IN LBS. WITH FULL SPAN OUTRIGGERS (24 FT)

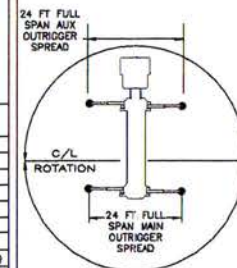


LOAD RADIUS (FT)	31 FT BOOM		43 FT BOOM		59 FT BOOM		75 FT BOOM		91 FT BOOM		103 FT BOOM		115 FT BOOM		127 FT BOOM		
	Δ	LBS	Δ	LBS	Δ	LBS	Δ	LBS	Δ	LBS	Δ	LBS	Δ	LBS	Δ	LBS	
7	73	90000	78	36000													
8	71	82100	77	36200													
10	67	71100	74	36500	79	35800											
12	63	62700	71	38700	77	36100	80	35500									
15	57	50800	67	39700	74	38100	78	35700	80	22000							
20	44	36200	59	38900	69	37300	74	33200	78	22000	79	17100	80	12850			
25	28	27400	51	28100	63	28600	70	28800	74	20700	77	17100	78	12600	80	10000	
30			41	22300	57	22800	66	23000	71	18000	74	16800	76	12500	77	10000	
35			28	17700	51	18200	61	18400	68	15900	71	14500	74	12400	75	10000	
40					44	14500	57	14800	64	14200	68	12700	71	11400	73	10000	
45					36	11800	52	12200	60	12100	65	11200	68	10000	71	9050	
50					27	9800	46	10100	57	10100	62	9900	65	8800	69	8100	
55					41	8500	53	8500	58	8500	63	8000	66	7200			
60					35	7200	48	7200	55	7250	60	7200	63	6400			
65					27	6100	44	6100	51	6200	57	6200	61	5700			
70					15	5100	39	5200	47	5300	53	5400	58	5100			
75							33	4500	43	4500	50	4600	55	4450			
80							26	3800	39	3850	46	3950	52	4000			
85							17	3200	34	3300	43	3400	49	3400			
90										28	2800	39	2850	48	2900		
95										20	2350	34	2400	42	2450		
100										5	1900	29	2000	39	2050		
105												22	1600	34	1700		
110												13	1250	30	1350		
115														24	1050		
120														17	750		
	0	22000	0	14000	0	8200	0	4700	0	2850	0	1900	0	1100	0	300	
		1300		950		700		550		450		400		360		325	

NOTE: RATINGS ABOVE THE HEAVY LINE ARE BASED ON STRUCTURAL COMPETENCE AND NOT ON MACHINE STABILITY

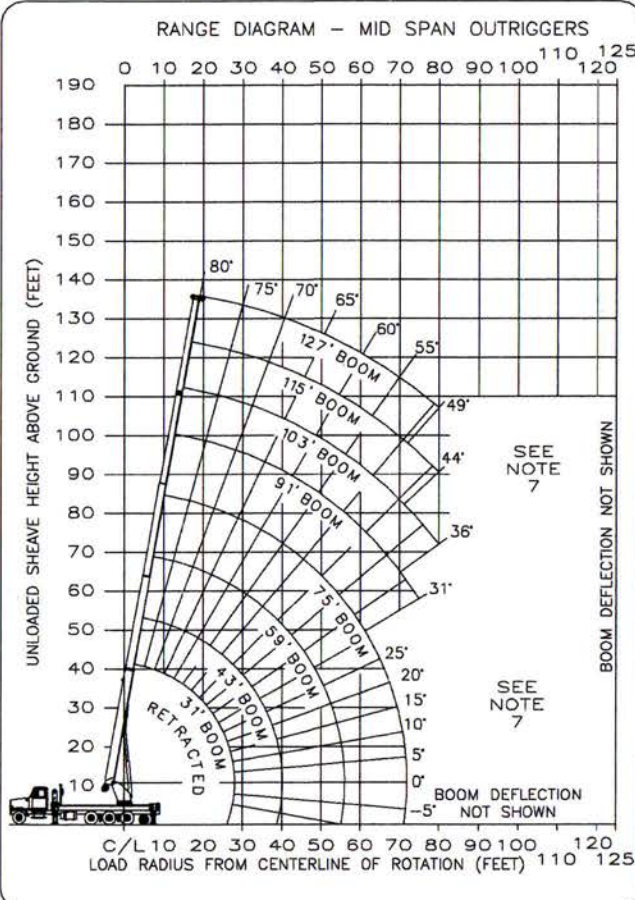
AREA OF OPERATION

360° CAPACITY WORKING AREA WITH FULL SPAN



- DEDUCTIONS FROM RATED LOADS FOR HANDLING DEVICES
- OVERHAUL BALL: 230 LBS
 - 1-SHEAVE LOADBLOCK: 360 LBS
 - 2-SHEAVE LOADBLOCK: 500 LBS
 - 3-SHEAVE LOADBLOCK: 600 LBS
- IF EQUIPPED WITH AUXILIARY HOIST:
- AUX SHEAVE HEAD : 75 LBS
 - AUX OVERHAUL BALL : 230 LBS
- BOOM CAPACITIES
- STOWED JIB LOAD DEDUCTIONS
 - OFFSETTING JIB DEDUCTIONS

Atec MODEL: AC45-127S-OJ
 Atec Industries Inc.

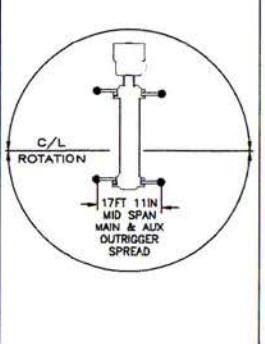


BOOM LOAD CAPACITIES IN LBS. WITH MID SPAN OUTRIGGERS (17 FT 11 IN)

LOAD RADIUS (FT)	31 FT BOOM		43 FT BOOM		59 FT BOOM		75 FT BOOM		91 FT BOOM		103 FT BOOM		115 FT BOOM		127 FT BOOM				
	∠	LBS	∠	LBS	∠	LBS	∠	LBS	∠	LBS	∠	LBS	∠	LBS	∠	LBS			
7	73	74700	78	36000															
8	71	68100	77	36200															
10	67	59000	74	36500	79	35800													
12	63	52000	71	38700	77	36100	80	35500											
15	57	42100	67	39700	74	38100	78	35700	80	22000									
20	44	32000	59	32900	68	33700	74	33200	78	22000	79	17100	80	12850					
25	25	20000	51	20900	63	21500	70	21900	74	20700	77	17100	78	12600	80	10000			
30			41	14500	57	15200	65	15400	71	15800	74	15100	76	12500	77	10000			
35			28	10600	51	11200	61	11500	67	11700	71	11400	73	11400	75	10000			
40					45	8600	57	8900	64	9000	67	9100	71	9200	73	9200			
45					37	6500	52	6800	60	7050	64	7150	68	7200	71	7300			
50					28	4900	46	5200	56	5400	61	5500	65	5550	68	5650			
55					12	3600	41	3950	52	4150	58	4250	62	4300	65	4400			
60							34	2950	48	3150	54	3250	59	3350	63	3400			
65							26	2150	43	2350	50	2450	56	2550	60	2600			
70							15	1500	38	1700	47	1800	52	1900	57	1950			
75									32	1150	42	1250	49	1350	54	1400			
80											38	800	46	850	51	900			
85																			
90																			
95																			
100																			
105																			
110																			
115																			
120																			
	0	15300	0	7800	0	3300	0	1200	SEE NOTE 7										
		1300		950		700		550		450		400		360		325			

NOTE: RATINGS ABOVE THE HEAVY LINE ARE BASED ON STRUCTURAL COMPETENCE AND NOT ON MACHINE STABILITY

AREA OF OPERATION
 360° CAPACITY WORKING AREA WITH MID SPAN OUTRIGGERS



DEDUCTIONS FROM RATED LOADS FOR HANDLING DEVICES

OVERHAUL BALL: 230 LBS

1-SHEAVE LOADBLOCK: 360 LBS

2-SHEAVE LOADBLOCK: 500 LBS

3-SHEAVE LOADBLOCK: 600 LBS

IF EQUIPPED WITH AUXILIARY HOIST:

AUX SHEAVE HEAD : 75 LBS

AUX OVERHAUL BALL : 230 LBS

↔ BOOM CAPACITIES

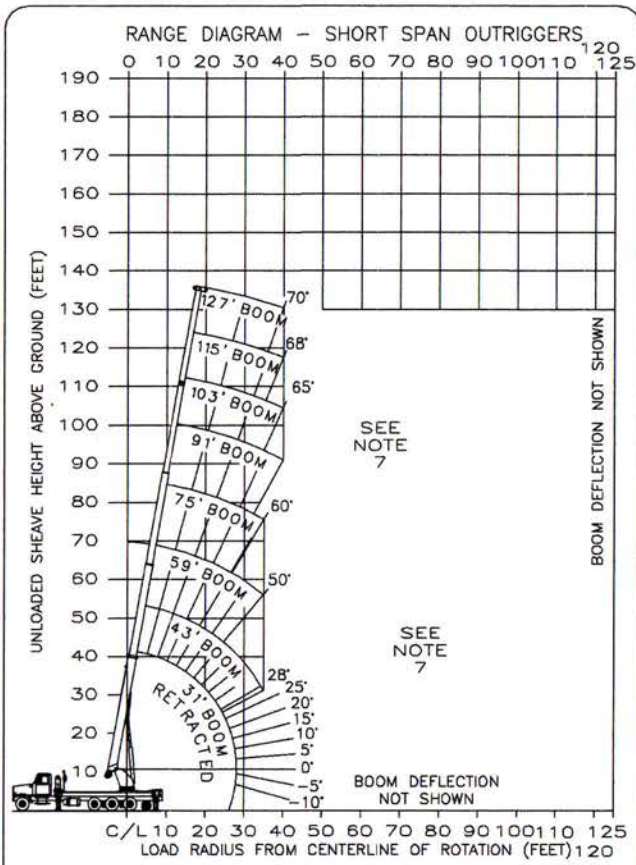
↔ STOWED JIB LOAD DEDUCTIONS

↔ OFFSETTING JIB DEDUCTIONS

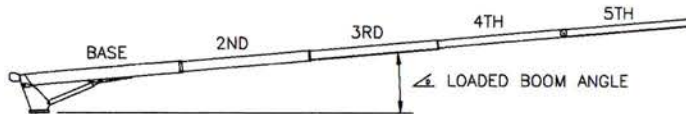
MAIN BOOM, MID OUTRIGGERS

Altec
Altec Industries Inc.

MODEL:
AC45-127S-OJ

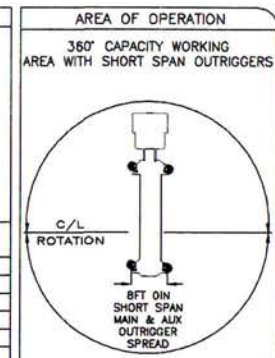


BOOM LOAD CAPACITIES IN LBS. WITH SHORT SPAN OUTRIGGERS (8 FT 0 IN)



LOAD RADIUS (FT)	31 FT BOOM		43 FT BOOM		59 FT BOOM		75 FT BOOM		91 FT BOOM		103 FT BOOM		115 FT BOOM		127 FT BOOM	
	∠	LBS	∠	LBS	∠	LBS	∠	LBS	∠	LBS	∠	LBS	∠	LBS	∠	LBS
7	73	52700	78	36000												
8	71	39000	77	36200												
10	67	24700	74	25500	79	26200										
12	63	17200	71	18000	76	18600	80	18900								
15	57	11000	67	11700	73	12200	77	12500	80	12700						
20	46	5850	59	6500	68	6900	73	7200	77	7350	79	7450	80	7500		
25	30	2950	51	3650	63	4100	69	4300	73	4450	76	4550	77	4600	79	4650
30			42	1850	57	2300	65	2500	70	2650	73	2750	75	2800	76	2850
35			30	600	51	1100	61	1300	66	1450	70	1500	72	1600	74	1600
40									63	550	66	600	69	700	72	700
45																
50																
55																
60																
65																
70																
75																
80																
85																
90																
95																
100																
105																
110																
115																
120																
0	1400	SEE NOTE 7														
	1300	950	700	550	450	400	360	325								

NOTE: RATINGS ABOVE THE HEAVY LINE ARE BASED ON STRUCTURAL COMPETENCE AND NOT ON MACHINE STABILITY

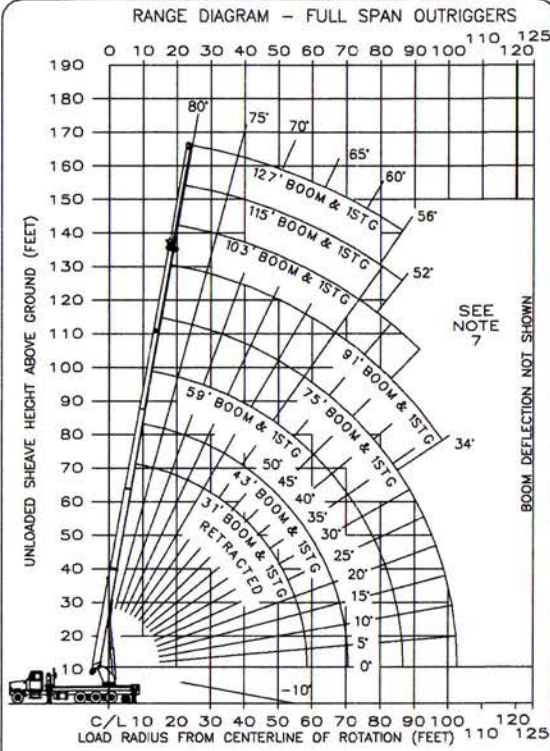


- DEDUCTIONS FROM RATED LOADS FOR HANDLING DEVICES**
- OVERHAUL BALL : 230 LBS
 - 1-SHEAVE LOADBLOCK : 360 LBS
 - 2-SHEAVE LOADBLOCK : 500 LBS
 - 3-SHEAVE LOADBLOCK : 600 LBS
- IF EQUIPPED WITH AUXILIARY HOIST:**
- AUX SHEAVE HEAD : 75 LBS
 - AUX OVERHAUL BALL : 230 LBS
- ← 0° BOOM CAPACITIES
← STOWED JIB LOAD DEDUCTIONS
← OFFSETTING JIB DEDUCTIONS

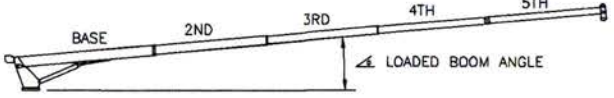
* DO NOT OPERATE OR ERECT JIBS IN THIS OUTRIGGER CONFIGURATION *



MODEL:
AC45-127S-OJ

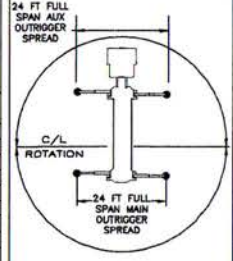


BOOM LOAD CAPACITIES IN LBS. WITH FULL SPAN OUTRIGGERS (24 FT)



LOAD RADIUS (FT)	31 FT BOOM		43 FT BOOM		59 FT BOOM		75 FT BOOM		91 FT BOOM		103 FT BOOM		115 FT BOOM		127 FT BOOM	
	Δ	LBS	Δ	LBS	Δ	LBS	Δ	LBS	Δ	LBS	Δ	LBS	Δ	LBS	Δ	LBS
8																
10	78	10000	80	10000												
12	76	10000	78	10000												
15	73	10000	78	10000	79	10000										
20	68	10000	72	10000	76	10000	78	10000								
25	63	9000	68	10000	72	10000	76	10000	78	10000	80	10000				
30	58	7500	64	9100	69	10000	73	10000	78	10000	78	10000	79	8000		
35	52	6400	60	7800	66	9150	70	9800	74	9750	76	9500	78	8000	79	4000
40	46	5600	55	6800	62	8000	67	8400	71	8500	73	8250	76	8000	77	4000
45	39	4900	50	6000	58	7100	64	7450	69	7500	71	7250	74	7000	75	4000
50	31	4400	44	5350	55	6350	61	6650	66	6850	69	6400	71	6200	74	4000
55	21	3950	39	4850	51	5750	58	6000	63	5950	67	5750	69	5500	72	4000
60			32	4400	46	5200	55	5450	61	5400	64	5150	67	4900	70	4000
65			24	4000	42	4750	51	4700	58	4500	62	4350	65	4250	68	4000
70			11	3700	37	4100	48	3850	55	3850	59	3500	63	3400	66	3300
75					31	3400	44	3150	52	2950	57	2800	60	2700	63	2600
80					24	2750	40	2500	49	2300	54	2200	58	2100	61	2000
85					13	2350	35	2000	45	1800	51	1700	55	1600	59	1500
90							30	1550	42	1350	48	1250	52	800	56	550
95							24	1100	38	950	45	800				
100							15	800	34	600						
105																
110																
115																
120																
125																
0	3600	0	3600	0	2050	0	550									

AREA OF OPERATION
360° CAPACITY WORKING AREA WITH FULL SPAN



DEDUCTIONS FROM RATED LOADS FOR HANDLING DEVICES

OVERHAUL BALL: 230 LBS

1-SHEAVE LOADBLOCK: 360 LBS

2-SHEAVE LOADBLOCK: 500 LBS

3-SHEAVE LOADBLOCK: 600 LBS

IF EQUIPPED WITH AUXILIARY HOIST:

AUX SHEAVE HEAD : 75 LBS

AUX OVERHAUL BALL : 230 LBS

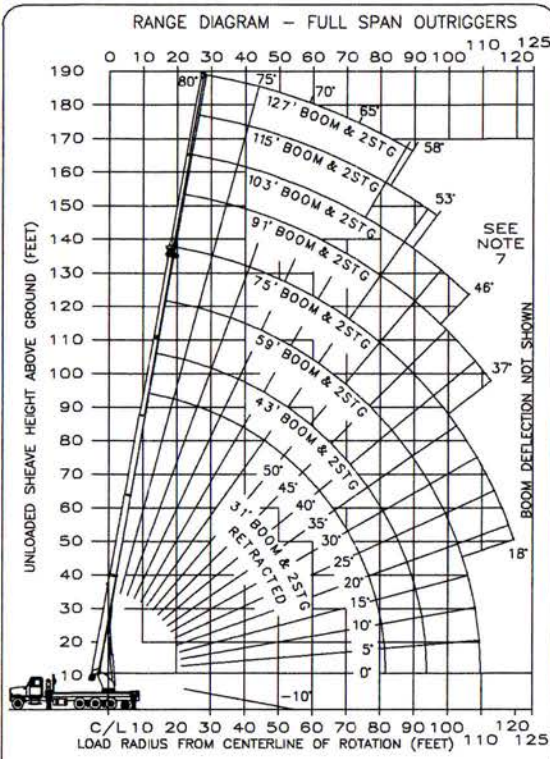
0° JIB CAPACITIES

990300109-C
(SHEET 4)

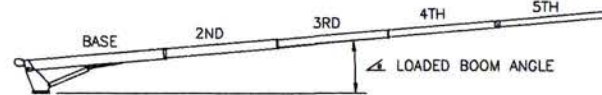
0° RET JIB, FULL OUTRIGGERS



MODEL:
AC45-127S-OJ



BOOM LOAD CAPACITIES IN LBS. WITH FULL SPAN OUTRIGGERS (24 FT)

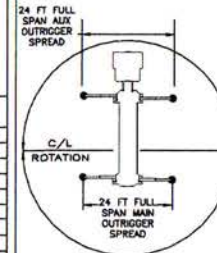


LOAD RADIUS (FT)	31 FT BOOM		43 FT BOOM		59 FT BOOM		75 FT BOOM		91 FT BOOM		103 FT BOOM		115 FT BOOM		127 FT BOOM	
	▲	▲	▲	▲	▲	▲	▲	▲	▲	▲	▲	▲	▲	▲	▲	▲
8																
10																
12																
15																
20	77	7550	78	8200	78	8150										
25	71	8250	73	7000												
30	67	5300	70	6000	73	6950	78	7850	80	7000						
35	63	4800	67	5250	71	6050	74	6850	76	7000	79	4500	80	4000		
40	59	4050	64	4800	68	5350	71	6100	74	6750	76	4500	78	4000	79	2600
45	55	3600	60	4100	65	4800	69	5450	72	6050	74	4500	76	4000	78	2600
50	51	3250	57	3700	62	4350	67	4950	70	5450	72	4500	74	4000	76	2600
55	47	2950	53	3400	60	3950	64	4500	68	4900	70	4500	73	4000	74	2600
60	42	2700	49	3100	57	3650	62	4150	66	4400	68	4500	71	4000	73	2600
65	37	2450	45	2850	53	3350	59	3850	64	4000	67	4100	69	4000	71	2600
70	30	2200	41	2650	50	3100	57	3550	61	3650	64	3750	67	3650	69	2600
75	23	2050	36	2400	47	2900	54	3250	59	3350	62	3400	65	3250	68	2600
80	12	1850	31	2250	43	2700	51	3000	57	3100	60	3050	63	2950	66	2600
85			25	2050	39	2500	48	2800	54	2750	58	2550	61	2400	64	2300
90			16	1950	35	2350	45	2550	52	2300	56	2100	59	1950	62	1800
95					30	2200	42	2150	49	1850	53	1700	57	1550	60	1400
100					25	2050	38	1750	46	1500	51	1350	55	1200	58	600
105					17	1750	34	1450	43	1200	48	1000	53	500		
110							30	1150	40	850	46	500				
115							25	850	37	500						
120							18	600								
125																
	0	1800	0	1800	0	1450										

SEE NOTE 7

AREA OF OPERATION

360° CAPACITY WORKING AREA WITH FULL SPAN

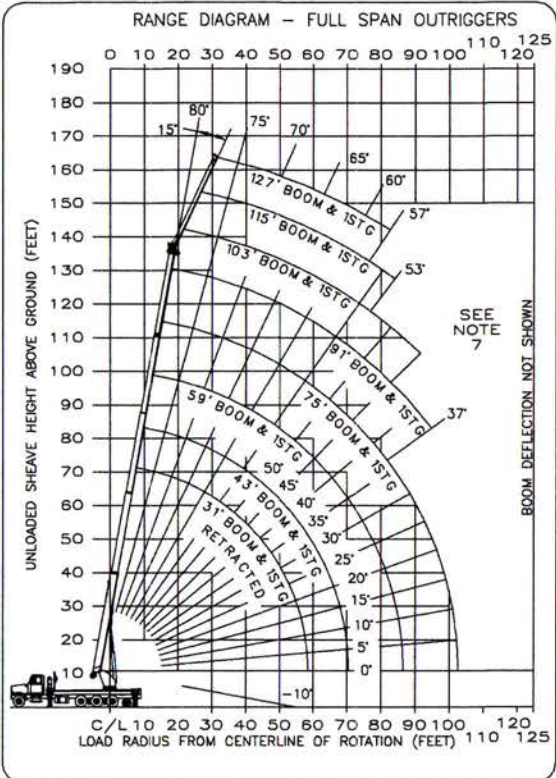


DEDUCTIONS FROM RATED LOADS FOR HANDLING DEVICES

- OVERHAUL BALL : 230 LBS
 - 1-SHEAVE LOADBLOCK : 360 LBS
 - 2-SHEAVE LOADBLOCK : 500 LBS
 - 3-SHEAVE LOADBLOCK : 600 LBS
- IF EQUIPPED WITH AUXILIARY HOIST:
- AUX SHEAVE HEAD : 75 LBS
 - AUX OVERHAUL BALL : 230 LBS
- 30° JIB CAPACITIES



MODEL:
AC45-127S-0J



BOOM LOAD CAPACITIES IN LBS. WITH FULL SPAN OUTRIGGERS (24 FT)

LOAD RADIUS (FT)	31 FT BOOM	43 FT BOOM	59 FT BOOM	75 FT BOOM	91 FT BOOM	103 FT BOOM	115 FT BOOM	127 FT BOOM
8								
10								
12								
15								
20	76	8250	78	9000				
25	71	7050	74	7800				
30	65	6150	70	6850	74	7650	78	8300
35	60	5400	66	6100	71	6900	74	7500
40	54	4850	61	5500	67	6300	71	6750
45	47	4400	56	5050	63	5750	69	6150
50	39	4000	51	4600	60	5300	65	5600
55	29	3750	45	4300	56	4900	62	5150
60			38	4000	51	4600	59	4750
65			30	3750	47	4350	56	4400
70			17	3650	42	4050	52	4100
75					36	3600	48	3500
80					29	2900	44	2800
85					18	2450	39	2250
90							34	1700
95							28	1250
100							19	900
105								
110								
115								
120								
125								
15	3800	15	3600	15	2350	15	750	

SEE NOTE 7

AREA OF OPERATION

360° CAPACITY WORKING AREA WITH FULL SPAN

24 FT FULL SPAN AUX OUTRIGGER SPREAD

C/L ROTATION

24 FT FULL SPAN MAIN OUTRIGGER SPREAD

DEDUCTIONS FROM RATED LOADS FOR HANDLING DEVICES

OVERHAUL BALL: 230 LBS

1-SHEAVE LOADBLOCK: 380 LBS

2-SHEAVE LOADBLOCK: 500 LBS

3-SHEAVE LOADBLOCK: 600 LBS

IF EQUIPPED WITH AUXILIARY HOIST:

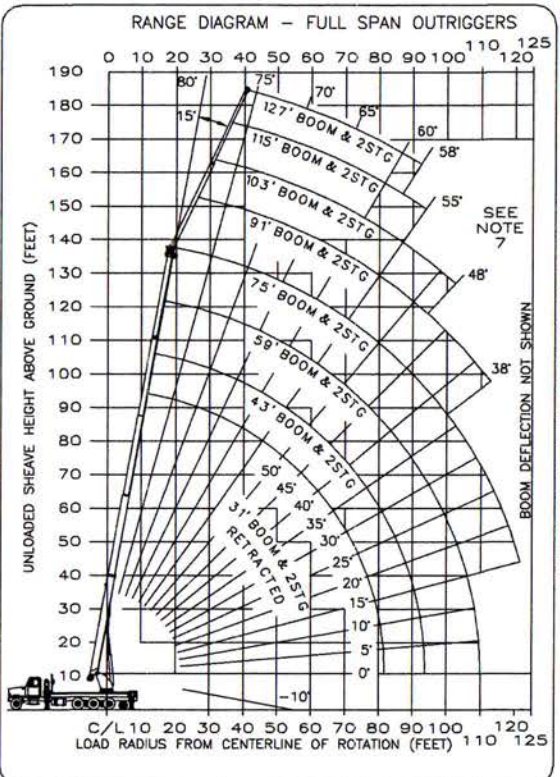
AUX SHEAVE HEAD : 75 LBS

AUX OVERHAUL BALL : 230 LBS

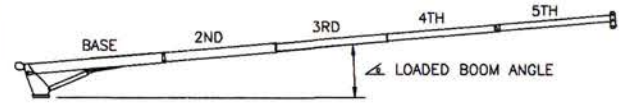
15° JIB CAPACITIES

15° RET JIB, FULL OUTRIGGERS

MODEL:
Atec AC45-127S-0J
 Atec Industries Inc.



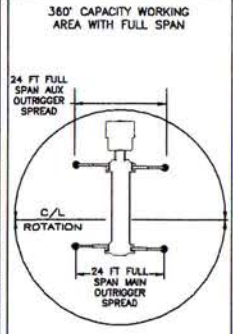
BOOM LOAD CAPACITIES IN LBS. WITH FULL SPAN OUTRIGGERS (24 FT)



LOAD RADIUS (FT)	31 FT BOOM	43 FT BOOM	59 FT BOOM	75 FT BOOM	91 FT BOOM	103 FT BOOM	115 FT BOOM	127 FT BOOM
	LBS	LBS	LBS	LBS	LBS	LBS	LBS	LBS
8								
10								
12								
15								
20								
25								
30	79	4350						
35	73	3850	78	4150	80	4400		
40	69	3500	72	3750	75	4000	80	4250
45	65	3150	69	3450	72	3700	75	3950
50	61	2900	65	3150	69	3450	72	3700
55	57	2650	61	2950	67	3200	70	3450
60	51	2450	58	2700	63	3000	68	3250
65	46	2250	54	2500	60	2850	65	3050
70	40	2050	49	2350	57	2650	63	2900
75	32	1950	44	2200	54	2500	60	2750
80	21	1850	33	2050	50	2350	57	2600
85								
90			24	1850	42	2100	51	2350
95					37	2000	48	2200
100								
105					31	1900	44	2100
110								
115								
120								
125								
15	1800	15	1800	15	1650	15	500	

SEE NOTE 7

AREA OF OPERATION



DEDUCTIONS FROM RATED LOADS FOR HANDLING DEVICES

OVERHAUL BALL : 230 LBS

1-SHEAVE LOADBLOCK: 360 LBS

2-SHEAVE LOADBLOCK: 500 LBS

3-SHEAVE LOADBLOCK: 600 LBS

IF EQUIPPED WITH AUXILIARY HOIST:

AUX SHEAVE HEAD : 75 LBS

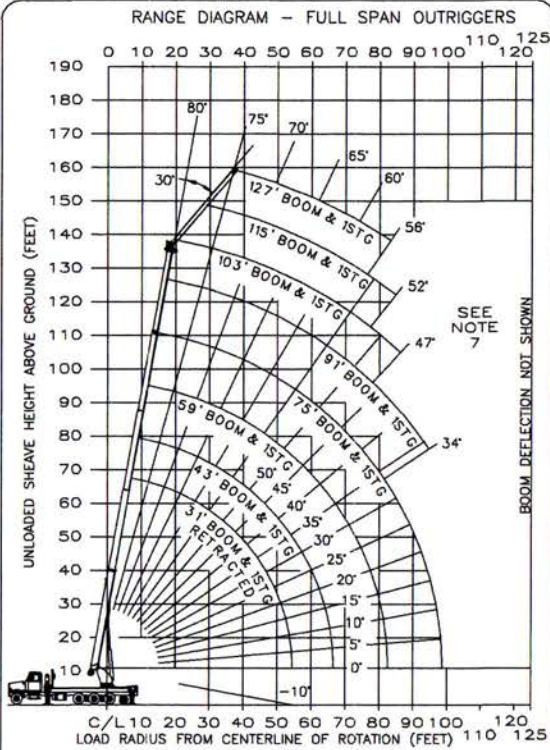
AUX OVERHAUL BALL : 230 LBS

15' JIB CAPACITIES

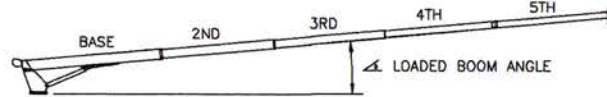
15' EXT JIB, FULL OUTRIGGERS



MODEL:
AC45-127S-OJ



BOOM LOAD CAPACITIES IN LBS. WITH FULL SPAN OUTRIGGERS (24 FT)

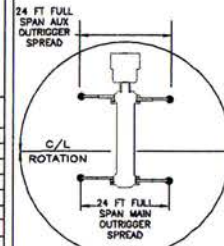


LOAD RADIUS (FT)	31 FT BOOM		43 FT BOOM		59 FT BOOM		75 FT BOOM		91 FT BOOM		103 FT BOOM		115 FT BOOM		127 FT BOOM	
	▲	LBS	▲	LBS	▲	LBS	▲	LBS	▲	LBS	▲	LBS	▲	LBS	▲	LBS
8																
10																
12																
15																
20																
25	78	5700														
30	72	5100	75	5450	79	5750										
35	66	4600	71	5000	75	5350	79	5600								
40	59	4250	66	4650	71	5000	75	5250	78	5450	80	5550				
45	52	3950	61	4300	68	4700	72	4950	75	5150	77	5200	80	5150		
50	43	3750	55	4050	64	4450	69	4700	73	4800	75	4800	77	4750	79	4000
55	31	3600	49	3850	59	4200	66	4500	70	4500	73	4450	75	4400	77	4000
60			41	3700	55	4000	62	4200	67	4150	70	4150	73	4050	75	4000
65			32	3600	50	3850	59	3950	64	3900	68	3850	71	3800	73	3700
70					44	3700	55	3750	61	3650	65	3600	68	3450	71	3350
75					38	3650	51	3550	58	3450	63	3300	66	3150	69	3000
80							46	3000	55	2950	60	2900	64	2850	67	2700
85							41	2350	52	2350	57	2300	61	2250	64	2250
90							36	1950	48	1800	54	1750	58	1750	62	1700
95									44	1300	50	1300	56	1250	59	1250
100									39	850	47	700	52	600	56	500
105										34	550					
110																
115																
120																
125																
30	3600	30	3600	30	3350	30	1500									

SEE NOTE 7

AREA OF OPERATION

360° CAPACITY WORKING AREA WITH FULL SPAN



DEDUCTIONS FROM RATED LOADS FOR HANDLING DEVICES

OVERHAUL BALL: 230 LBS

1-SHEAVE LOADBLOCK: 360 LBS

2-SHEAVE LOADBLOCK: 500 LBS

3-SHEAVE LOADBLOCK: 600 LBS

IF EQUIPPED WITH AUXILIARY HOIST:

AUX SHEAVE HEAD : 75 LBS

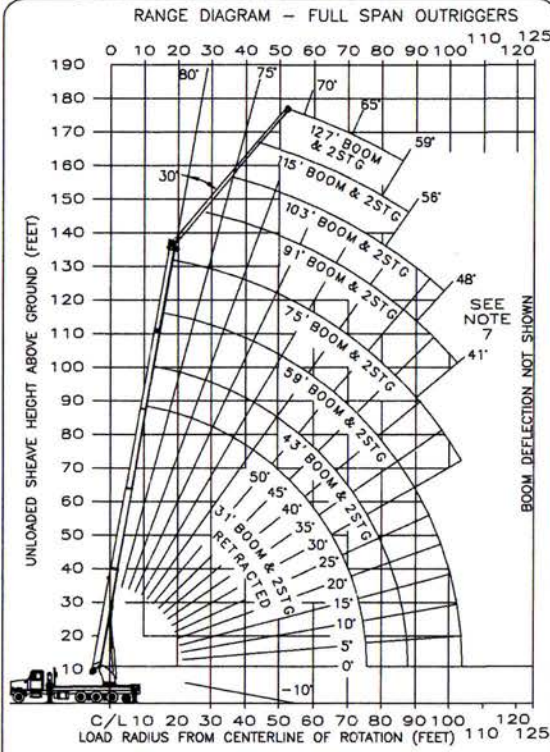
AUX OVERHAUL BALL : 230 LBS

30° JIB CAPACITIES

990300109-C
(SHEET B)

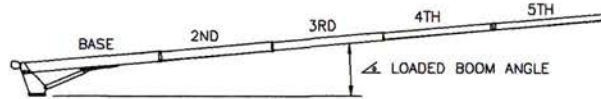
30° RET JIB, FULL OUTRIGGERS

Aitec MODEL: AC45-127S-OJ
Aitec Industries Inc.



30' EXT JIB, FULL OUTRIGGERS

BOOM LOAD CAPACITIES IN LBS. WITH FULL SPAN OUTRIGGERS (24 FT)

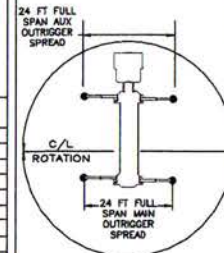


LOAD RADIUS (FT)	31 FT BOOM		43 FT BOOM		59 FT BOOM		75 FT BOOM		91 FT BOOM		103 FT BOOM		115 FT BOOM		127 FT BOOM	
	▲	LBS	▲	LBS	▲	LBS	▲	LBS	▲	LBS	▲	LBS	▲	LBS	▲	LBS
8																
10																
12																
15																
20																
25																
30																
35																
40	80	3000														
45	73	2750	78	2900												
50	69	2550	72	2700	76	2850	80	2950								
55	64	2350	69	2500	73	2700	76	2800	79	2850						
60	59	2200	65	2350	69	2500	73	2650	76	2750	77	2800				
65	53	2050	60	2200	66	2400	70	2500	73	2600	75	2650	77	2700		
70	46	1900	56	2100	63	2250	68	2400	71	2500	73	2550	75	2600	77	2600
75	38	1850	50	2000	59	2150	65	2300	69	2400	71	2450	74	2500	75	2450
80			44	1900	55	2050	62	2200	66	2300	69	2350	72	2300	74	2300
85			37	1850	51	1950	59	2100	64	2200	67	2200	70	2150	72	2150
90				46	1900	55	2000	61	2100	65	2100	68	2050	70	2000	
95				41	1850	52	1950	58	2000	62	1950	65	1900	68	1850	
100				34	1800	48	1900	56	1900	60	1850	63	1800	66	1700	
105					44	1850	52	1800	57	1750	61	1650	64	1550		
110					39	1450	49	1400	54	1350	59	1300	62	1250		
115					32	1150	45	1050	51	1050	56	750	59	550		
120							41	700	48	600						
125																
30	1800	30	1800	30	1800	30	1050									

SEE NOTE 7

AREA OF OPERATION

360° CAPACITY WORKING AREA WITH FULL SPAN



DEDUCTIONS FROM RATED LOADS FOR HANDLING DEVICES

OVERHAUL BALL: 230 LBS

1-SHEAVE LOADBLOCK: 360 LBS

2-SHEAVE LOADBLOCK: 500 LBS

3-SHEAVE LOADBLOCK: 600 LBS

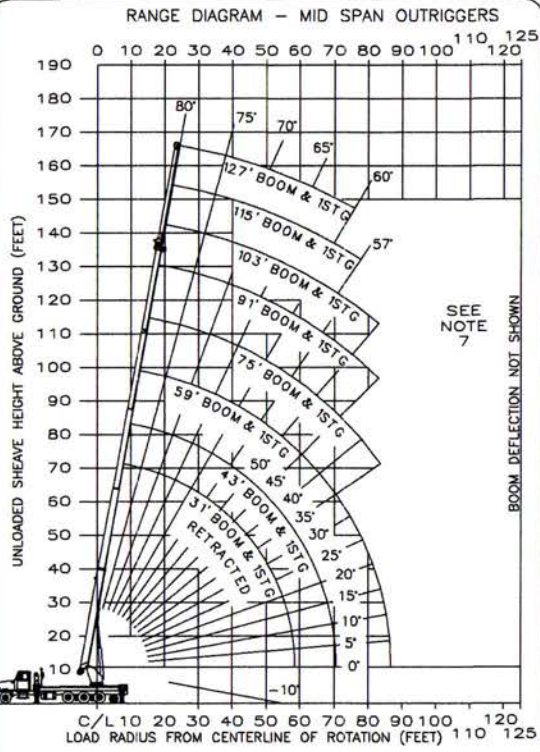
IF EQUIPPED WITH AUXILIARY HOIST:

AUX SHEAVE HEAD : 75 LBS

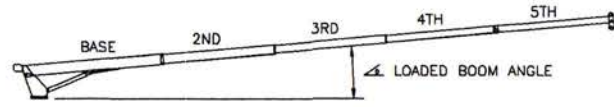
AUX OVERHAUL BALL : 230 LBS

30° JIB CAPACITIES

MODEL:
Atec AC45-127S-OJ
 Altec Industries Inc.



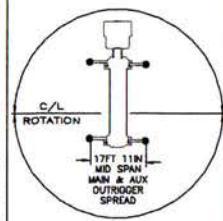
BOOM LOAD CAPACITIES IN LBS. WITH MID SPAN OUTRIGGERS (17 FT 11 IN)



LOAD RADIUS (FT)	31 FT BOOM		43 FT BOOM		59 FT BOOM		75 FT BOOM		91 FT BOOM		103 FT BOOM		115 FT BOOM		127 FT BOOM	
	▲	LBS	▲	LBS	▲	LBS	▲	LBS	▲	LBS	▲	LBS	▲	LBS	▲	LBS
10	78	10000	80	10000												
12	76	10000	78	10000												
15	73	10000	76	10000	79	10000										
20	68	10000	72	10000	76	10000	78	10000								
25	63	9000	68	10000	72	10000	76	10000	78	10000	80	10000				
30	58	7500	64	9100	69	10000	73	10000	78	10000	78	10000	79	8000		
35	52	6400	60	7800	66	9150	70	9800	74	9750	78	9500	78	8000	79	4000
40	46	5800	55	6800	62	8000	67	8400	71	8500	73	8250	78	8000	77	4000
45	39	4900	50	6000	58	7100	64	7250	69	7100	71	6950	74	6750	75	4000
50	31	4400	44	5350	55	6000	61	5800	68	5800	69	5450	71	5300	74	4000
55	21	3950	39	4850	51	4800	58	4600	63	4450	67	4300	69	4200	72	4000
60			32	4250	46	3900	55	3650	61	3400	64	3300	67	3200	70	3150
65			24	3450	42	3150	51	2900	58	2700	62	2600	65	2450	68	2400
70			11	2800	37	2500	48	2200	55	2050	59	1900	63	1800	66	1750
75					31	1900	44	1700	52	1500	57	1400	60	1300	64	1200
80					24	1450	40	1200	49	1000	54	850	57	800	60	650
85					13	1000	35	800	45	600	50	500				
90																
95																
100																
105																
110																
115																
120																
125																
	0	3600	0	2600	0	800										

SEE NOTE 7

AREA OF OPERATION
 360° CAPACITY WORKING
 AREA WITH MID SPAN OUTRIGGERS



DEDUCTIONS FROM RATED LOADS FOR HANDLING DEVICES

OVERHAUL BALL: 230 LBS

1-SHEAVE LOADBLOCK: 360 LBS

2-SHEAVE LOADBLOCK: 500 LBS

3-SHEAVE LOADBLOCK: 600 LBS

IF EQUIPPED WITH AUXILIARY HOIST:

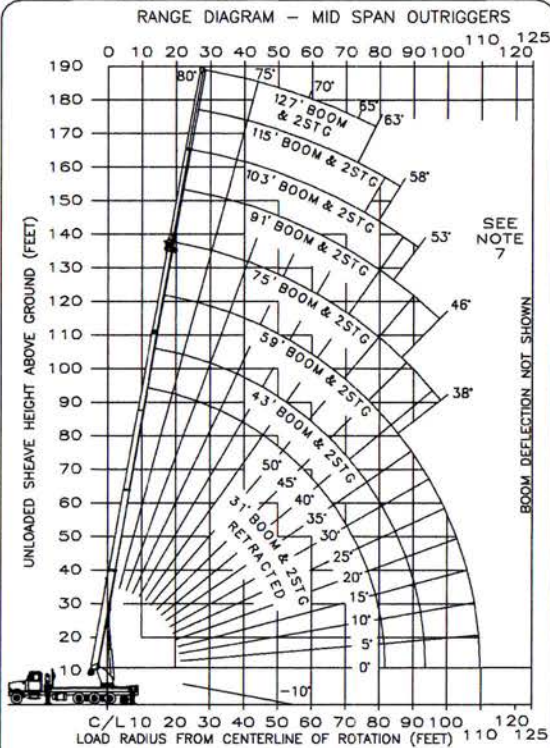
AUX SHEAVE HEAD : 75 LBS

AUX OVERHAUL BALL : 230 LBS

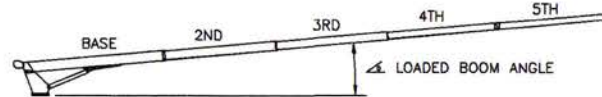
← 0° JIB CAPACITIES

0° RET JIB, MID OUTRIGGERS

MODEL:
Atec AC45-127S-0J
 Atec Industries Inc.



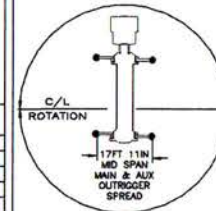
BOOM LOAD CAPACITIES IN LBS. WITH MID SPAN OUTRIGGERS (17 FT 11 IN)



LOAD RADIUS (FT)	31 FT BOOM		43 FT BOOM		59 FT BOOM		75 FT BOOM		91 FT BOOM		103 FT BOOM		115 FT BOOM		127 FT BOOM	
	▲	▲	▲	▲	▲	▲	▲	▲	▲	▲	▲	▲	▲	▲	▲	▲
8																
10																
12																
15																
20	77	7550	78	8200												
25	71	6250	73	7000	78	8150										
30	67	5300	70	6000	73	6950	78	7850	80	7000						
35	63	4600	67	5250	71	6050	74	6850	76	7000	79	4500	80	4000		
40	59	4050	64	4600	68	5350	71	6100	72	6050	74	4500	76	4000	79	2800
45	55	3600	60	4100	65	4800	69	5450	70	5450	72	4500	74	4000	78	2800
50	51	3250	57	3700	62	4350	67	4950	70	5450	72	4500	74	4000	78	2800
55	47	2950	53	3400	60	3950	64	4500	68	4900	70	4500	73	4000	74	2600
60	42	2700	49	3100	57	3650	62	4150	66	4350	68	4200	71	4000	73	2500
65	37	2450	45	2850	53	3350	59	3850	64	3600	67	3400	69	3300	71	2500
70	30	2200	41	2650	50	3100	57	3200	61	2900	64	2750	67	2600	69	2500
75	23	2050	36	2400	47	2900	54	2650	59	2350	62	2200	65	2050	68	1900
80	12	1850	31	2250	43	2450	51	2150	57	1900	60	1700	63	1550	66	1400
85			25	2050	39	2050	46	1750	54	1450	58	1300	61	1150	63	900
90			16	1950	35	1650	45	1350	52	1100	56	950	58	750		
95					30	1350	42	1050	49	750	53	600				
100					25	1050	38	750	46	500						
105					17	750										
110																
115																
120																
125																
0	1800	0	1750	0	500											

SEE NOTE 7

AREA OF OPERATION
 360° CAPACITY WORKING
 AREA WITH MID SPAN OUTRIGGERS



DEDUCTIONS FROM RATED
 LOADS FOR HANDLING DEVICES

OVERHAUL BALL: 230 LBS

1-SHEAVE LOADBLOCK: 360 LBS

2-SHEAVE LOADBLOCK: 500 LBS

3-SHEAVE LOADBLOCK: 600 LBS

IF EQUIPPED WITH AUXILIARY
 HOIST:

AUX SHEAVE HEAD : 75 LBS

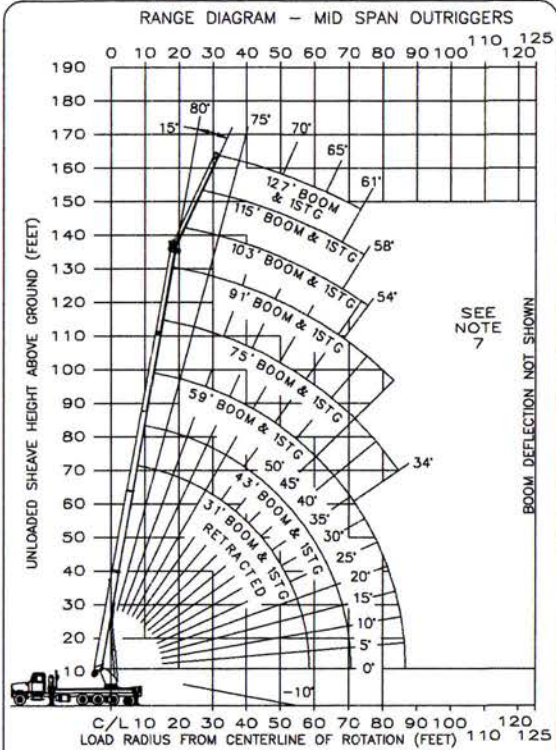
AUX OVERHAUL BALL : 230 LBS

☐ JIB CAPACITIES

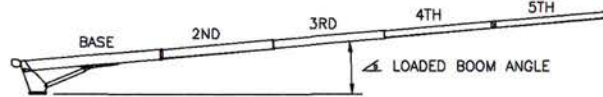
990300109-C
 (SHEET 11)

0° EXT JIB, MID OUTRIGGERS

MODEL:
Atec AC45-127S-OJ
 Atec Industries Inc.



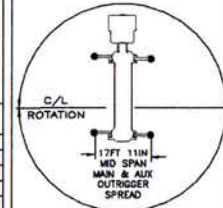
BOOM LOAD CAPACITIES IN LBS. WITH MID SPAN OUTRIGGERS (17 FT 11 IN)



LOAD RADIUS (FT)	31 FT BOOM		43 FT BOOM		59 FT BOOM		75 FT BOOM		91 FT BOOM		103 FT BOOM		115 FT BOOM		127 FT BOOM	
	▲	LBS	▲	LBS	▲	LBS	▲	LBS	▲	LBS	▲	LBS	▲	LBS	▲	LBS
8																
10																
12																
15																
20	76	8250	78	9000												
25	71	7050	74	7800	78	8600										
30	65	6150	70	6850	74	7650	78	8300	80	8500						
35	60	5400	66	6100	71	6900	74	7500	77	7550	79	7600				
40	54	4850	61	5500	67	6300	71	6750	75	6800	77	6800	79	6800		
45	47	4400	56	5050	63	5750	68	6150	72	6200	75	6200	77	6150	78	4000
50	39	4000	51	4600	58	5300	65	5600	70	5650	72	5650	75	5600	76	4000
55	29	3750	45	4300	56	4900	62	5150	67	5100	70	5050	73	4950	75	4000
60			38	4000	51	4400	58	4750	64	4100	68	4000	70	3900	73	3850
65			30	3700	47	3550	56	3400	62	3250	65	3150	68	3050	71	3000
70			17	2900	42	2800	52	2650	59	2550	63	2450	66	2350	69	2300
75					36	2200	48	2050	56	1950	60	1850	64	1750	67	1700
80					29	1600	44	1500	53	1400	57	1300	61	1250	64	1200
85					18	1100	39	1050	49	950	54	850	58	700	61	600
90							34	650	45	550						
95																
100																
105																
110																
115																
120																
125																
15	3600	15	2600	15	850											

SEE NOTE 7

AREA OF OPERATION
 360° CAPACITY WORKING
 AREA WITH MID SPAN OUTRIGGERS



DEDUCTIONS FROM RATED LOADS FOR HANDLING DEVICES

OVERHAUL BALL: 230 LBS

1-SHEAVE LOADBLOCK: 360 LBS

2-SHEAVE LOADBLOCK: 500 LBS

3-SHEAVE LOADBLOCK: 600 LBS

IF EQUIPPED WITH AUXILIARY HOIST:

AUX SHEAVE HEAD : 75 LBS

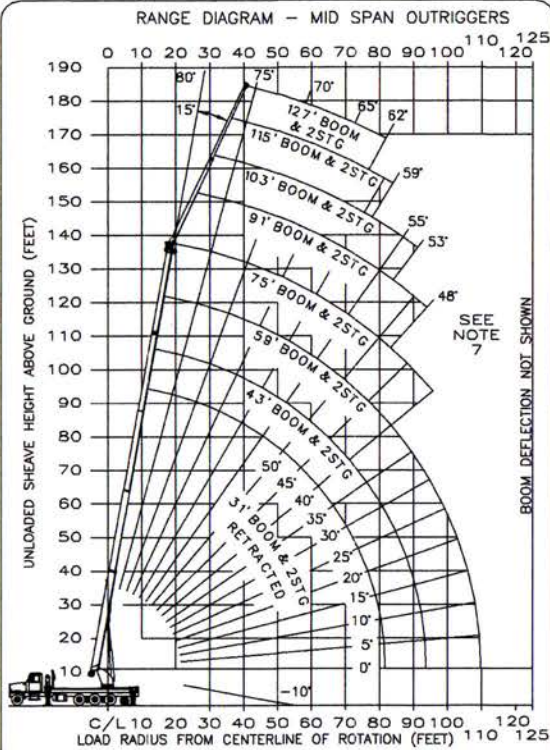
AUX OVERHAUL BALL : 230 LBS

15' JIB CAPACITIES

990300109-C
 (SHEET 12)

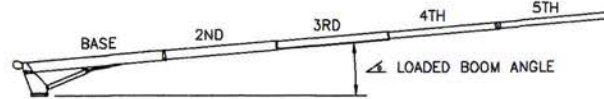
15' RET JIB, MID OUTRIGGERS

MODEL:
Atec AC45-127S-OJ
 Atec Industries Inc.



15' EXT JIB, MID OUTRIGGERS

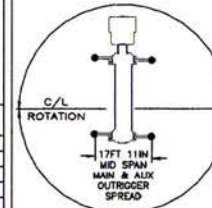
BOOM LOAD CAPACITIES IN LBS. WITH MID SPAN OUTRIGGERS (17 FT 11 IN)



LOAD RADIUS (FT)	31 FT BOOM		43 FT BOOM		59 FT BOOM		75 FT BOOM		91 FT BOOM		103 FT BOOM		115 FT BOOM		127 FT BOOM	
	Δ	LBS	Δ	LBS	Δ	LBS	Δ	LBS	Δ	LBS	Δ	LBS	Δ	LBS	Δ	LBS
8																
10																
12																
15																
20																
25																
30	79	4350														
35	73	3850	78	4150	80	4400										
40	69	3500	72	3750	75	4000	80	4250								
45	65	3150	69	3450	72	3700	75	3950	77	4150						
50	61	2900	65	3150	69	3450	73	3700	75	3900	77	4000				
55	58	2650	61	2950	67	3200	70	3450	73	3850	75	3750	77	3850	79	2600
60	51	2450	58	2700	63	3000	68	3250	71	3450	73	3550	75	3650	77	2600
65	46	2250	54	2500	60	2850	65	3050	69	3250	71	3350	73	3350	75	2600
70	40	2050	49	2350	57	2650	63	2900	67	3100	69	3100	72	3100	74	2600
75	32	1950	44	2200	54	2500	60	2750	64	2900	67	2900	70	2800	72	2600
80	21	1850	39	2050	50	2350	57	2600	62	2500	65	2400	68	2250	70	2200
85			33	1950	48	2200	54	2200	60	2000	63	1900	66	1800	68	1700
90			24	1850	42	2000	51	1800	57	1600	61	1500	64	1400	67	1300
95					37	1800	48	1400	54	1250	58	1100	62	1000	65	900
100					31	1250	44	1050	52	900	56	800	59	600	62	500
105					24	900	40	750	48	600	53	500				
110																
115																
120																
125																
15	1800	15	1800	15	550											

SEE NOTE 7

AREA OF OPERATION
 360° CAPACITY WORKING
 AREA WITH MID SPAN OUTRIGGERS



DEDUCTIONS FROM RATED LOADS FOR HANDLING DEVICES

- OVERHAUL BALL: 230 LBS
- 1-SHEAVE LOADBLOCK: 360 LBS
- 2-SHEAVE LOADBLOCK: 500 LBS
- 3-SHEAVE LOADBLOCK: 600 LBS

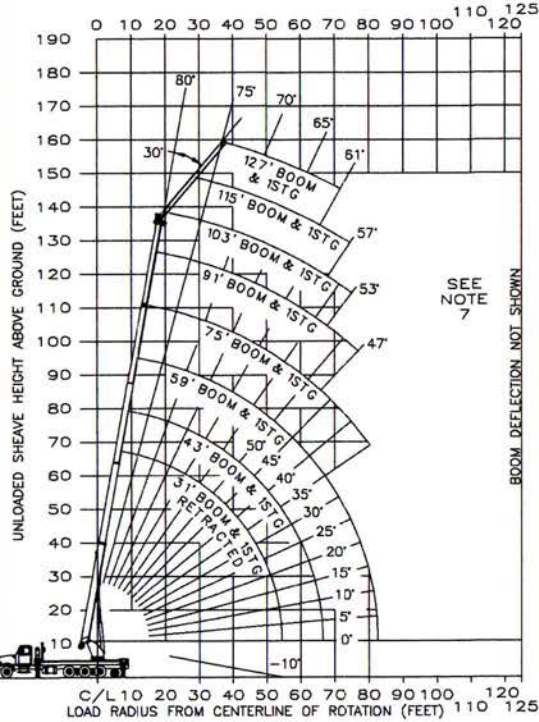
IF EQUIPPED WITH AUXILIARY HOIST:

- AUX SHEAVE HEAD : 75 LBS
- AUX OVERHAUL BALL : 230 LBS
- 15° JIB CAPACITIES



MODEL:
AC45-127S-0J

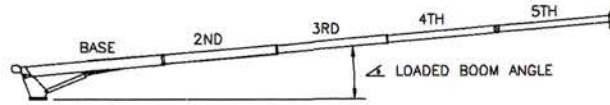
RANGE DIAGRAM - MID SPAN OUTRIGGERS



SEE NOTE 7

BOOM DEFLECTION NOT SHOWN

BOOM LOAD CAPACITIES IN LBS. WITH MID SPAN OUTRIGGERS (17 FT 11 IN)

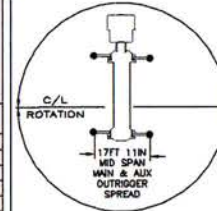


LOAD RADIUS (FT)	31 FT BOOM		43 FT BOOM		59 FT BOOM		75 FT BOOM		91 FT BOOM		103 FT BOOM		115 FT BOOM		127 FT BOOM	
	▲	▲	▲	▲	▲	▲	▲	▲	▲	▲	▲	▲	▲	▲	▲	▲
8																
10																
12																
15																
20																
25	78	5700														
30	72	5100	75	5450	79	5750										
35	66	4500	71	5000	75	5350	79	5600								
40	59	4250	66	4650	71	5000	75	5250								
45	52	3950	61	4300	68	4700	72	4950	73	4800	75	4800	77	4750	79	4000
50	43	3750	55	4050	64	4450	69	4700	73	4800	75	4800	77	4750	79	4000
55	31	3600	49	3850	59	4200	66	4500	70	4500	73	4450	75	4400	77	4000
60			41	3700	55	4000	62	4200	67	4150	70	4150	73	4050	75	4000
65			32	3600	50	3800	59	3750	64	3850	68	3600	71	3550	73	3550
70					44	3000	55	2950	61	2900	65	2850	68	2800	71	2750
75					38	2300	51	2300	58	2250	63	2200	66	2150	69	2100
80							46	1700	55	1650	60	1650	64	1600	67	1550
85							41	1200	52	1150	57	1150	61	1100	64	1000
90							35	750	47	750	53	700	57	600	61	550
95																
100																
105																
110																
115																
120																
125																
	30	3600	30	3600	30	1700										

SEE NOTE 7

AREA OF OPERATION

360° CAPACITY WORKING AREA WITH MID SPAN OUTRIGGERS



DEDUCTIONS FROM RATED LOADS FOR HANDLING DEVICES

- OVERHAUL BALL: 230 LBS
- 1-SHEAVE LOADBLOCK: 360 LBS
- 2-SHEAVE LOADBLOCK: 500 LBS
- 3-SHEAVE LOADBLOCK: 600 LBS

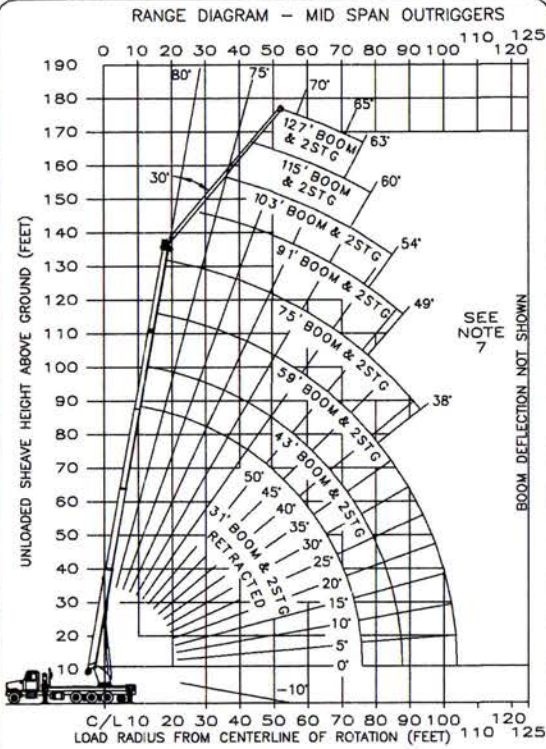
IF EQUIPPED WITH AUXILIARY HOIST:

- AUX SHEAVE HEAD : 75 LBS
- AUX OVERHAUL BALL : 230 LBS

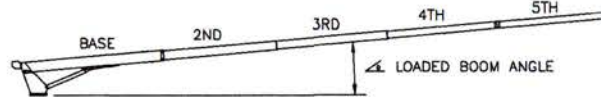
30° JIB CAPACITIES

30° RET JIB, MID OUTRIGGERS

Ateco MODEL: AC45-127S-0J
 Ateco Industries Inc.



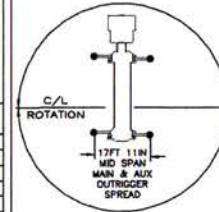
BOOM LOAD CAPACITIES IN LBS. WITH MID SPAN OUTRIGGERS (17 FT 11 IN)



LOAD RADIUS (FT)	31 FT BOOM		43 FT BOOM		59 FT BOOM		75 FT BOOM		91 FT BOOM		103 FT BOOM		115 FT BOOM		127 FT BOOM	
	∠	LBS	∠	LBS	∠	LBS	∠	LBS	∠	LBS	∠	LBS	∠	LBS	∠	LBS
8																
10																
12																
15																
20																
25																
30																
35																
40	80	3000														
45	73	2750	78	2900												
50	69	2550	72	2700	76	2850	80	2950	79	2850						
55	64	2350	69	2500	73	2700	76	2800	76	2800	77	2800				
60	59	2200	65	2350	69	2500	73	2650	73	2600	75	2650	77	2700		
65	53	2050	60	2200	66	2400	70	2500	69	2400	71	2450	74	2500	75	2450
70	46	1900	56	2100	63	2250	68	2400	68	2300	71	2400	74	2450	75	2400
75	38	1850	50	2000	59	2150	65	2300	65	2200	68	2300	72	2300	74	2300
80			44	1900	55	2050	62	2200	64	2200	67	2200	70	2150	72	2150
85			37	1850	51	1950	59	2100	64	2200	67	2200	70	2150	72	2150
90					46	1900	55	2000	61	2050	65	1950	68	1900	70	1800
95					41	1800	52	1700	58	1800	62	1550	65	1450	68	1400
100					34	1350	48	1300	56	1200	60	1150	63	1100	66	1000
105							44	950	52	900	57	800	60	700	63	600
110							38	600	49	550	54	500				
115																
120																
125																
30	1800	30	1800	30	1150											

SEE NOTE 7

AREA OF OPERATION
 360° CAPACITY WORKING
 AREA WITH MID SPAN OUTRIGGERS



DEDUCTIONS FROM RATED LOADS FOR HANDLING DEVICES

- OVERHAUL BALL: 230 LBS
- 1-SHEAVE LOADBLOCK: 360 LBS
- 2-SHEAVE LOADBLOCK: 500 LBS
- 3-SHEAVE LOADBLOCK: 600 LBS
- IF EQUIPPED WITH AUXILIARY HOIST:
- AUX SHEAVE HEAD : 75 LBS
- AUX OVERHAUL BALL : 230 LBS
- 30° JIB CAPACITIES

990300109-C
 (SHEET 15)

30° EXT JIB, MID OUTRIGGERS

 DANGER

1. The operator must read, understand and follow the instructions found in the owners manual before operating this crane.
2. Positioning or operation of crane beyond areas shown on this chart is not intended nor approved except where specified in owners manual.
3. Loaded boom angles at specified boom lengths gives only an approximation of the operating radius. The boom angle before loading should be greater to account for deflections. Do not exceed the operating radius for rated loads.
4. When between listed boom lengths or radii, always use the smallest of the values shown. Capacities for the 31-ft boom length must only be lifted with boom fully retracted.
5. Do not attempt to tip the machine to determine allowable loads.
6. Do not lift off the main boom tip while the jib is erected. Do not travel with crane boom extended or jib erected.
7. Do not lower boom into this area. Instability may occur. Hydraulic pressure may not allow raising the boom without retracting boom first.
8. Crane load ratings on outriggers are based on freely suspended loads with the machine leveled and standing on firm uniform supporting surface. Do not move a load horizontally on the ground in any direction.
9. Actual working capacities depend on supporting surface, wind and other factors affecting stability such as hazardous surroundings, experience of personnel, and proper handling. All these factors must be taken into account by the operator.
10. The maximum in service wind speed is 20 mph. It is recommended when wind velocity is between 20 mph and 30 mph rated loads and boom lengths shall be appropriately reduced and/or other measures shall be taken to ensure stability and load control. When wind speed exceeds 30 mph main boom should be retracted and stowed.
11. For duty cycle operations (e.g., clam shell, concrete bucket work) weight of load must not exceed 80% of rated lifting capacities.
12. Multi-crane lift operations must be carefully planned well in advance and should only be performed by skilled personnel experienced in such procedures.
13. The maximum load which may be telescoped is limited by hydraulic pressure, boom angle and boom lubrication. It is allowable to attempt to telescope any load within the limits of the load rating chart.
14. Never handle personnel with this machine unless the requirements of applicable national, state, and local regulations and safety codes are met.
15. Do not lift loads when boom is fully lowered. The LMAP senses pressure and will not provide warnings or lockout when the boom cylinder is fully retracted.

INFORMATION

1. Deductions must be made from rated loads for stowed jib, optional attachments, hooks and loadblocks (see deduction chart). Weights of slings and other load handling equipment shall be considered a part of the load.
2. Crane load ratings with outriggers are based on outriggers extended and set with all tires clear of the ground.
3. Load ratings do not exceed 85% of tipping load.
4. The maximum outrigger pad load is 65,000 lbs at rated capacities.

DEFINITIONS

1. Operating radius is the horizontal distance from the centerline of rotation to the center of the vertical load line or load hook with load suspended.
2. Loaded boom angle as shown in the capacity chart is the included angle between the horizontal and longitudinal axes of the boom base after lifting rated load at rated radius.

THIS MACHINE COMPLIES WITH ASME B30.5 AND OSHA REGULATIONS
1910.180 AND 1926.1400 WHERE APPLICABLE AT DATE OF MANUFACTURE

REMOVAL OF THIS PLACARD IS A VIOLATION OF THE LAW

990300109-C (SHEET 16)

INFO & DEFINITIONS