

| REVISIONS |             |      |                   |
|-----------|-------------|------|-------------------|
| REV       | DESCRIPTION | DATE | DRAWN/REV<br>EC # |
| A         | RELEASED    | -    | -                 |

"ALTEC" AND TITLE LETTERING TO BE WHITE ON BLACK BACKGROUND BORDER

LINE AND TEXT TO BE BOLD RED

LINE AND TEXT TO BE BOLD BLUE

LINE AND TEXT TO BE BOLD RED

4X R.25



**AERIAL OPERATION-BOOM & JIB**  
MODEL AC45E-127S-OJ

**NON-INSULATED  
PLATFORM  
ASSEMBLY**

BLACK TEXT ON YELLOW BACKGROUND

REACH DIAGRAM - FULL SPAN OUTRIGGERS

FOR USE WITH ALTEC PLATFORM ASSEMBLY PART NUMBER 970268044 OR 970369795 ONLY.

ONLY FOR USE ON ALTEC AC45E-127S-OJ.

DO NOT OPERATE THE PLATFORM IN WINDS IN EXCESS OF 20 MPH AT PLATFORM WORKING HEIGHT.

PLATFORM ASSEMBLY WEIGHT = 510 LBS.

PLATFORM LOAD CAPACITY = 800 LBS.

LOAD LINE MUST BE STOWED AT WINCH WHEN UNIT IS OPERATED IN AERIAL MODE.

ASME B30.23 COMPLIANT

ALTEC INDUSTRIES  
325 SOUTH CENTER DRIVE  
DALEVILLE, VA 24083

MFG. DATE \_\_\_mo/20\_\_\_yr

991296193 A

LINE AND TEXT TO BE BOLD GREEN

LINE AND TEXT TO BE BOLD BLUE

LINE AND TEXT TO BE BOLD GREEN

BLACK TEXT ON YELLOW BACKGROUND

8.42

LINE AND TEXT TO BE BOLD RED

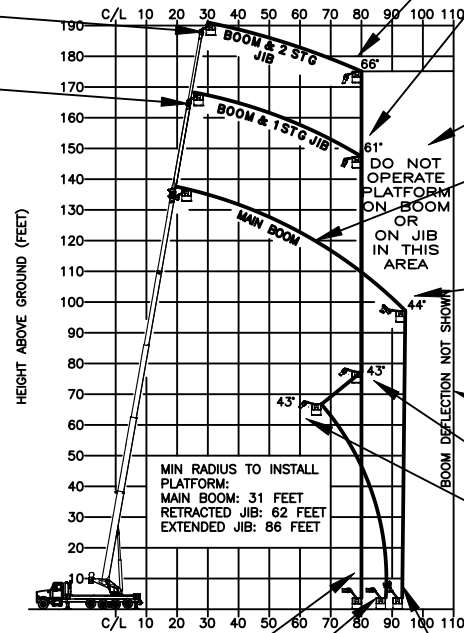
LINE TO BE BOLD BLUE

LINE TO BE BOLD GREEN

LINE TO BE BOLD RED

NOTES:

- REFER TO ALTEC STANDARD STS-0002 (TYPE 2A) FOR PLACARD SPECIFICATIONS.
- BLACK COLOR LINEWORK AND TEXT ON WHITE BACKGROUND EXCEPT WHERE NOTED.



|  |  |   |
|--|--|---|
| DRAWN: N.WELLES<br>APPROVED: B.PLUNKETT<br>DATE: 03/16/2021<br>REV CHECKED:<br>REV APPROVED: | UNLESS OTHERWISE NOTED, TOLERANCES ARE:<br>FRACTIONS: 1/16 ANGLES: 1/2°<br>DECIMAL: .1 .2 .3 .4 .5 .6 .7 .8 .9 .001 .002 .003 .004 .005 .006 .007 .008 .009 .010<br>HATCHED SURFACES: 132 MICROINCHES<br>THESE TOLERANCES DO NOT APPLY TO BASIC DIMENSIONS<br>DO NOT SCALE THIS PRINT. REMOVE ALL BURRS & SHARP EDGES. ALL DIMENSIONS ARE IN INCHES.<br>CAD SOFTWARE: DWG FILE<br>DRAWING DIMENSIONED TO ALTEC STANDARD CDS-0007 | FORM: 970346885-C<br>Altec Industries, Inc.<br>210 Inverness Center Drive<br>Birmingham, AL 35242 |
| TITLE: PLACARD, ENGLISH, REACH DIAGRAM, AC45E-127S-OJ, B30.23 COMPLIANT                      |  |   |
| SHEET 1 OF 3   | SCALE: NONE<br>WEIGHT: -<br>SIZE: 3<br>NUMBER: 991296193<br>REV: A   |   |

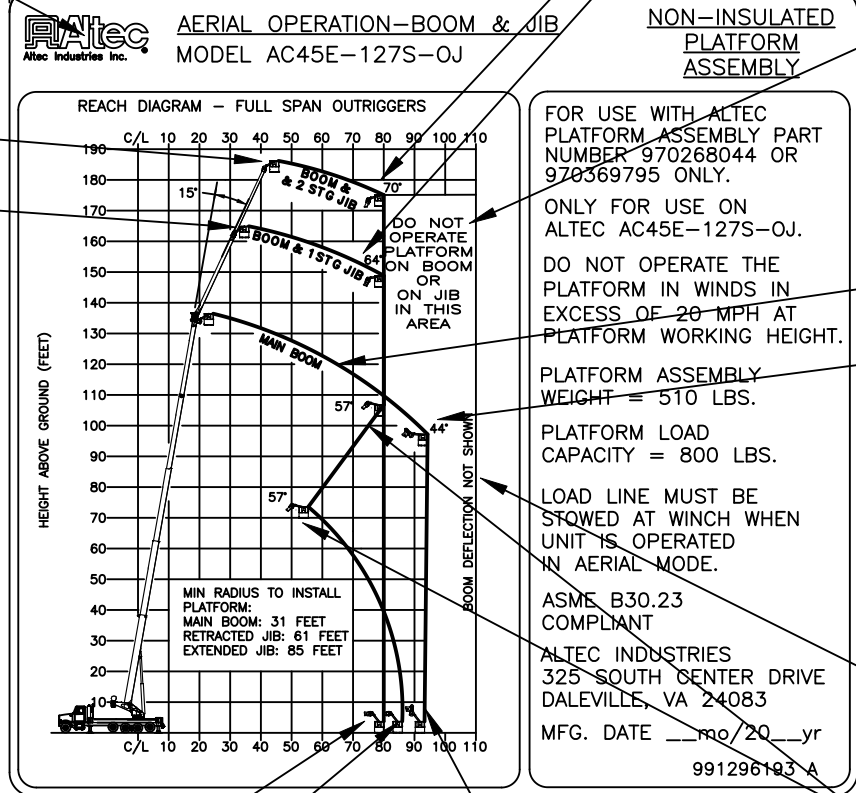
"ALTEC" AND TITLE LETTERING TO BE WHITE ON BLACK BACKGROUND BORDER

LINE AND TEXT TO BE BOLD RED

LINE AND TEXT TO BE BOLD BLUE

LINE AND TEXT TO BE BOLD RED

4X R.25



LINE AND TEXT TO BE BOLD BLUE

BLACK TEXT ON YELLOW BACKGROUND

LINE AND TEXT TO BE BOLD GREEN

LINE AND TEXT TO BE BOLD GREEN

BLACK TEXT ON YELLOW BACKGROUND

LINE AND TEXT TO BE BOLD RED

LINE TO BE BOLD BLUE

LINE TO BE BOLD GREEN

LINE TO BE BOLD RED

|  |  |   |         |                   |        |
|--|--|---|---------|-------------------|--------|
| DRAWN: N.WELLES<br>APPROVED: B.PLUNKETT<br>DATE: 03/16/2021<br>REV CHECKED:<br>REV APPROVED: | UNLESS OTHERWISE NOTED, TOLERANCES ARE:<br>FRACTIONS: 1/16 ANGLES: 1/2°<br>DECIMAL: .1 .2 .3 .4 .5 .6 .7 .8 .9 .0001 ±.0150<br>MACHINED SURFACES: 125 MICRONS/0.005<br>THESE TOLERANCES DO NOT APPLY TO BASIC DIMENSIONS<br>DO NOT SCALE THIS PRINT. REMOVE ALL BURRS & SHARP EDGES. ALL DIMENSIONS ARE IN INCHES.<br>CAD SOFTWARE: DWG FILE<br>DRAWING DIMENSIONED TO ALTEC STANDARD CDS-0007 | FORM: 970346885-C<br>Altec Industries, Inc.<br>210 Inverness Center Drive<br>Birmingham, AL 35242 |         |                   |        |
| TITLE: PLACARD, ENGLISH, REACH DIAGRAM, AC45E-127S-OJ, B30.23 COMPLIANT                      |  |   |         |                   |        |
| SHEET 2 OF 3   | SCALE: NONE  | WEIGHT: -   | SIZE: 3 | NUMBER: 991296193 | REV: A |

"ALTEC" AND TITLE LETTERING TO BE WHITE ON BLACK BACKGROUND BORDER

LINE AND TEXT TO BE BOLD RED

LINE AND TEXT TO BE BOLD BLUE

LINE AND TEXT TO BE BOLD RED

4X R.25



AERIAL OPERATION-BOOM & JIB  
MODEL AC45E-127S-OJ

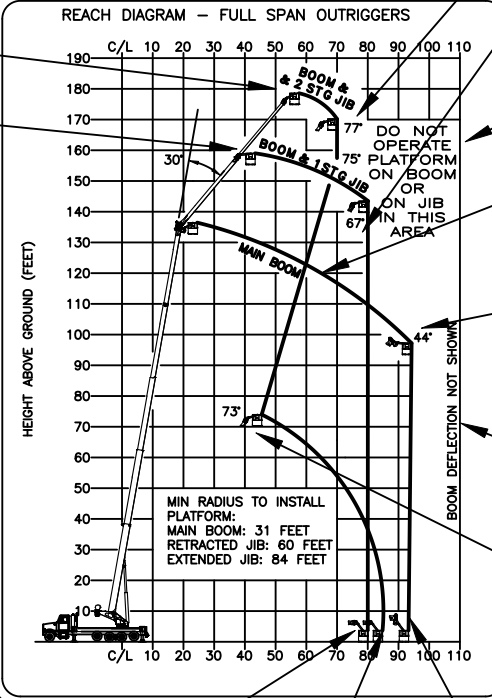
NON-INSULATED  
PLATFORM  
ASSEMBLY

BLACK TEXT ON  
YELLOW BACKGROUND

LINE AND TEXT TO BE BOLD BLUE

LINE AND TEXT TO BE BOLD GREEN

8.42



FOR USE WITH ALTEC PLATFORM ASSEMBLY PART NUMBER 970268044 OR 970369795 ONLY.

ONLY FOR USE ON ALTEC AC45E-127S-OJ.

DO NOT OPERATE THE PLATFORM IN WINDS IN EXCESS OF 20 MPH AT PLATFORM WORKING HEIGHT.

PLATFORM ASSEMBLY WEIGHT = 510 LBS.

PLATFORM LOAD CAPACITY = 800 LBS.

LOAD LINE MUST BE STOWED AT WINCH WHEN UNIT IS OPERATED IN AERIAL MODE.

ASME B30.23 COMPLIANT

ALTEC INDUSTRIES  
325 SOUTH CENTER DRIVE  
DALEVILLE, VA 24083

MFG. DATE \_\_\_mo/20\_\_\_yr

991296193 A

LINE AND TEXT TO BE BOLD GREEN

BLACK TEXT ON  
YELLOW BACKGROUND

LINE AND TEXT TO BE BOLD RED

LINE TO BE BOLD BLUE

LINE TO BE BOLD GREEN

LINE TO BE BOLD RED

|  |  |   |         |                   |        |
|--|--|---|---------|-------------------|--------|
| DRAWN: N.WELLES<br>APPROVED: B.PLUNKETT<br>DATE: 03/16/2021<br>REV CHECKED:<br>REV APPROVED: | UNLESS OTHERWISE NOTED, TOLERANCES ARE:<br>FRACTIONS: 1/16 ANGLES: 1/2°<br>DECIMAL: .1 .2 .3 .4 .5 .6 .7 .8 .9 .001 ±.001 ±.002 ±.005 ±.010<br>MACHINED SURFACES: 125 MICRONS<br>THESE TOLERANCES DO NOT APPLY TO BASIC DIMENSIONS<br>DO NOT SCALE THIS PRINT. REMOVE ALL BURRS & SHARP EDGES. ALL DIMENSIONS ARE IN INCHES.<br>CAD SOFTWARE: DWG FILE<br>DRAWING DIMENSIONED TO ALTEC STANDARD CDS-0007 | FORM: 970346885-C<br>Altec Industries, Inc.<br>210 Inverness Center Drive<br>Birmingham, AL 35242 |         |                   |        |
| TITLE: PLACARD, ENGLISH, REACH DIAGRAM, AC45E-127S-OJ, B30.23 COMPLIANT                      |  |   |         |                   |        |
| SHEET 3 OF 3   | SCALE: NONE  | WEIGHT: -   | SIZE: 3 | NUMBER: 991296193 | REV: A |